

North American Style—General Information



Voltage Rating

130V AC/DC	1000 to 4000 Amperes
150V AC/DC	70 to 1000 Amperes
250V AC/DC	35 to 2500 Amperes
500V AC/DC	35 to 1600 Amperes
600V AC	1 to 1000 Amperes
700V AC/DC	5 to 1200 Amperes
800V DC	35 to 600 Amperes
1000V AC, 700V DC	35 to 2000 Amperes

All Bussmann North American Style fuses are certified for their rated voltage.

Characteristics:

- Low energy let-thru (I²t)
- Low watts loss
- Superior cycling capability
- Low arc voltage
- Excellent DC performance

North American style fuses provide an excellent solution for medium power applications. While there are currently no published standards for these fuses, the industry has standardized on mounting centers that accept Bussmann fuses.

Accessories

Bussmann offers a comprehensive line of fuse bases that provide the user with design and manufacturing flexibility.



North American Style

FWA 130V

Voltage Rating: 130V AC/130V DC (130V DC rating applies to 1000 through 2000 amperes only.)

Interrupting Rating: 200kA RMS Symmetrical.

Agency Approvals: UL Recognized, Std. 248-13

Watts loss provided at rated current.



Electrical Characteristics

Ordering Information

Rated Current RMS-Amps	I ² t (A ² SEC) @ 100kA		Watts Loss	Part Number	Carton Qty.	Carton Weight (lbs)
	Pre-arc	Clearing at 130V				
1000	170000	460000	60.0	FWA-1000AH	1	3.3
1200	270000	730000	70.0	FWA-1200AH	1	3.3
1500	520000	1400000	78.0	FWA-1500AH	1	3.3
2000	860000	2400000	108.0	FWA-2000AH	1	3.3
2500	1500000	4100000	130.0	FWA-2500AH	1	3.3
3000	2100000	5700000	150.0	FWA-3000AH	1	3.3
4000	3400000	9200000	257.0	FWA-4000AH	1	3.3

BIF document: 720001

FWA 150V

Voltage Rating: 150V AC/150V DC (150V DC rating applies to 70 through 800 amperes only.)

Interrupting Rating: 100kA RMS Symmetrical.

Agency Approvals: UL Recognized, Std. 248-13

Watts loss provided at rated current.



Electrical Characteristics

Ordering Information

Rated Current RMS-Amps	I ² t (A ² SEC) @ 100kA		Watts Loss	Part Number	Carton Qty.	Carton Weight (lbs)
	Pre-arc	Clearing at 150V				
70	470	4000	6.9	FWA-70A	10	1.76
80	670	6000	7.7	FWA-80A	10	1.76
100	1200	12000	9.0	FWA-100A	10	1.76
125	1870	18000	11.2	FWA-125A	10	1.76
150	2700	26000	13.5	FWA-150A	10	1.76
200	4780	45000	17.6	FWA-200A	10	1.76
250	7470	70000	22.5	FWA-250A	10	1.76
300	10760	100000	27.0	FWA-300A	10	1.76
350	15700	140000	30.6	FWA-350A	10	1.76
400	20300	180000	35.2	FWA-400A	10	1.76
500	39000	120000	35.0	FWA-500A	5	2.42
600	46000	140000	47.0	FWA-600A	5	2.42
700	75000	220000	49.0	FWA-700A	5	2.42
800	92000	280000	58.0	FWA-800A	5	2.42
1000	170000	510000	60.0	FWA-1000A	5	2.42

CE CE logo denotes compliance with European Union Low Voltage Directive (50-1000V AC, 75-1500V DC). Refer to BIF document #8002 or contact Bussmann Application Engineering at 636-527-1270 for more information.

BIF document: 720002



North American Style

FWX 250V

Voltage Rating: 250V AC/250V DC (250V DC rating on 35 through 800 amperes only.)

Interrupting Rating: 200kA RMS Symmetrical.

Agency Approvals:

UL Recognized, Std. 248-13

Watts loss provided at rated current.



Electrical Characteristics

Ordering Information

Rated Current RMS-Amps	I^2t (A ² SEC) @ 100kA		Watts Loss	Part Number	Carton Qty.	Carton Weight (lbs)
	Pre-arc	Clearing at 250V				
35	50	230	4.2	FWX-35A	5	1.40
40	60	310	5.2	FWX-40A	5	1.40
45	80	390	5.7	FWX-45A	5	1.40
50	100	520	6.0	FWX-50A	5	1.40
60	140	740	8.1	FWX-60A	5	1.40
70	330	1400	7.2	FWX-70A	1	0.32
80	430	1850	8.1	FWX-80A	1	0.32
90	570	2450	9.0	FWX-90A	1	0.32
100	740	3150	10.0	FWX-100A	1	0.32
125	1130	4850	12.5	FWX-125A	1	0.32
150	1620	6950	15.7	FWX-150A	1	0.32
175	2170	9300	18.5	FWX-175A	1	0.32
200	2790	12000	22	FWX-200A	1	0.32
225	3210	14700	24	FWX-225A	1	0.52
250	3960	18100	27	FWX-250A	1	0.52
275	4720	21600	31	FWX-275A	1	0.52
300	6000	27300	32	FWX-300A	1	0.52
350	10600	48600	39	FWX-350A	1	0.52
400	14500	66100	44	FWX-400A	1	0.52
450	22100	101000	49	FWX-450A	1	0.52
500	28000	128000	54	FWX-500A	1	0.52
600	41100	188000	62	FWX-600A	1	0.52
700	48800	190000	72	FWX-700A	1	0.90
800	59000	230000	84	FWX-800A	1	0.90
1000	44000	360000	100	FWX-1000AH	1	2.86
1200	92000	750000	103	FWX-1200AH	1	2.86
1500	120000	880000	140	FWX-1500AH	1	2.86
1600	160000	1200000	140	FWX-1600AH	1	2.86
2000	320000	2300000	151	FWX-2000AH	1	2.86
2500	670000	4700000	163	FWX-2500AH	1	2.86

CE CE logo denotes compliance with European Union Low Voltage Directive (50-1000V AC, 75-1500V DC). Refer to BIF document #8002 or contact Bussmann Application Engineering at 636-527-1270 for more information.



North American Style

FWH 500V

Voltage Rating: 500V AC/500V DC (500V DC rating applies to 35 through 800 amperes only.)

Interrupting Rating: 200kA RMS Symmetrical.

Agency Approvals: UL Recognized, Std. 248-13, 35-1200A; CSA Component Acceptance 35-1600A

Watts loss provided at rated current.



Electrical Characteristics

Ordering Information

Rated Current RMS-Amps	I ² t (A ² SEC) @ 100kA		Watts Loss	Part Number	Carton Qty.	Carton Weight (lbs)
	Pre-arc	Clearing at 500V				
35	34	150	.8	FWH-35B	10	1.34
40	76	320	7.5	FWH-40B	10	1.34
45	105	450	7.5	FWH-45B	10	1.34
50	135	670	7.5	FWH-50B	10	1.34
60	210	900	9.9	FWH-60B	10	1.34
70	210	900	10.6	FWH-70B	10	2.05
80	305	1400	12.7	FWH-80B	10	2.05
90	360	1600	15	FWH-90B	10	2.05
100	475	2000	17	FWH-100B	10	2.05
125	800	3500	25	FWH-125B	5	1.65
150	1100	4600	30	FWH-150B	5	1.65
175	1450	6200	35	FWH-175B	5	1.65
200	1900	8500	40	FWH-200B	5	1.65
225	4600	23300	39	FWH-225A	1	0.57
250	6300	32200	41	FWH-250A	1	0.57
275	7900	40300	46	FWH-275A	1	0.57
300	9800	49800	51	FWH-300A	1	0.57
325	13700	63800	53	FWH-325A	1	0.57
350	14500	72900	58	FWH-350A	1	0.57
400	19200	96700	65	FWH-400A	1	0.57
450	24700	127000	74	FWH-450A	1	1.00
500	29200	149000	84	FWH-500A	1	1.00
600	41300	206000	108	FWH-600A	1	1.00
700	55000	298000	120	FWH-700A	1	2.14
800	76200	409000	129	FWH-800A	1	2.14
1000	92000	450000	145	FWH-1000A	1	4.62
1200	122000	600000	180	FWH-1200A	1	4.62
1400	200000	1000000	210	FWH-1400A	1	11.66
1600	290000	1400000	230	FWH-1600A	1	11.66

CE logo denotes compliance with European Union Low Voltage Directive (50-1000V AC, 75-1500V DC). Refer to BIF document #8002 or contact Bussmann Application Engineering at 636-527-1270 for more information.



North American Style

KAC 600V

Voltage Rating: 600V AC

Interrupting Rating: 200kA

RMS Symmetrical.

Agency Approvals:

UL Recognized, Std. 248-13,1-600A

- For new installations, Bussmann recommends the 700 Volt FWP series fuse. The 600V fuses are supplied as replacements only.



Ordering Information

Part Number	Carton Qty.	Carton Weight (lbs)
KAC-1	10	0.50
KAC-2	10	0.50
KAC-3	10	0.50
KAC-4	10	0.50
KAC-5	10	0.50
KAC-6	10	0.50
KAC-7	10	0.50
KAC-8	10	0.50
KAC-9	10	0.50
KAC-10	10	0.50
KAC-12	10	0.50
KAC-15	10	0.50
KAC-17.5	10	0.50
KAC-20	10	0.50
KAC-25	10	0.50
KAC-30	10	0.50
KAC-35	10	1.40
KAC-40	10	1.40
KAC-45	10	1.40
KAC-50	10	1.40
KAC-60	10	1.40
KAC-70	5	1.56
KAC-80	5	1.56
KAC-90	5	1.56
KAC-100	5	1.56
KAC-110	1	0.78
KAC-125	1	0.78
KAC-150	1	0.78
KAC-175	1	0.78
KAC-200	1	0.78
KAC-225	1	1.92
KAC-250	1	1.92
KAC-300	1	1.92
KAC-350	1	1.92
KAC-400	1	1.92
KAC-450	1	3.16
KAC-500	1	3.16
KAC-600	1	3.16
KAC-700	1	3.16
KAC-800	1	3.16
KAC-1000	1	6.24

CE CE logo denotes compliance with European Union Low Voltage Directive (50-1000V AC, 75-1500V DC). Refer to BIF document #8002 or contact Bussmann Application Engineering at 636-527-1270 for more information.

KBC 600V

Voltage Rating: 600V AC

Interrupting Rating: 200kA

RMS Symmetrical.

Agency Approvals:

UL Recognized, Std. 248-13,

35-600A

- For new installations, Bussmann recommends the 700 Volt FWP series fuse. The 600V fuses are supplied as replacements only.



Ordering Information

Part Number	Carton Qty.	Carton Weight (lbs)
KBC-35	10	1.40
KBC-40	10	1.40
KBC-45	10	1.40
KBC-50	10	1.40
KBC-60	10	1.40
KBC-70	5	1.44
KBC-80	5	1.44
KBC-90	5	1.44
KBC-100	5	1.44
KBC-110	1	0.48
KBC-125	1	0.48
KBC-150	1	0.48
KBC-175	1	0.48
KBC-200	1	0.48
KBC-225	1	0.77
KBC-250	1	0.77
KBC-300	1	0.77
KBC-350	1	0.77
KBC-400	1	0.77
KBC-450	1	1.32
KBC-500	1	1.32
KBC-600	1	1.32
KBC-800	1	4.50

CE CE logo denotes compliance with European Union Low Voltage Directive (50-1000V AC, 75-1500V DC). Refer to BIF document #8002 or contact Bussmann Application Engineering at 636-527-1270 for more information.



North American Style

FWP 700V

Voltage Rating: 700V AC/700V DC (700V DC rating applies to 5 through 800 amperes only.)

Interrupting Rating: 200kA RMS Symmetrical.

Agency Approvals: UL Recognized, Std. 248-13, 5-800A; CSA Component Acceptance, 35-100A & 700-800A

Watts loss provided at rated current.



CE CE logo denotes compliance with European Union Low Voltage Directive (50-1000V AC, 75-1500V DC). Refer to BIF document #8002 or contact Bussmann Application Engineering at 636-527-1270 for more information.

Electrical Characteristics

Ordering Information

Rated Current RMS-Amps	I ² t (A ² SEC) @ 100kA		Watts Loss	Part Number	Carton Qty.	Carton Weight (lbs)
	Pre-arc	Clearing at 700V				
5	1.6	10	1.5	FWP-5B	10	2.25
10	3.6	20	4	FWP-10B	10	2.25
15	10	75	5.5	FWP-15B	10	2.25
20	26	180	6	FWP-20B	10	2.25
25	44	340	7	FWP-25B	10	2.25
30	58	450	9	FWP-30B	10	2.25
35	34	160	12	FWP-35B	10	2.42
40	76	320	12	FWP-40B	10	2.42
50	135	600	12	FWP-50B	10	2.42
60	210	950	15.5	FWP-60B	10	2.42
70	305	1400	18	FWP-70B	10	2.42
80	360	1600	21	FWP-80B	10	2.42
90	415	1900	25	FWP-90B	10	2.42
100	540	2500	27	FWP-100B	10	2.42
125	1800	7300	28	FWP-125A	1	0.65
150	2900	11700	32	FWP-150A	1	0.65
175	4200	16700	35	FWP-175A	1	0.65
200	5500	22000	43	FWP-200A	1	0.65
225	7700	31300	45	FWP-225A	1	1.17
250	10500	42500	48	FWP-250A	1	1.17
300	17600	71200	58	FWP-300A	1	1.17
350	23700	95600	65	FWP-350A	1	1.17
400	31000	125000	78	FWP-400A	1	1.17
450	36400	137000	94	FWP-450A	1	2.39
500	45200	170000	107	FWP-500A	1	2.39
600	66700	250000	122	FWP-600A	1	2.39
700	54000	300000	125	FWP-700A	1	1.21
800	78000	450000	140	FWP-800A	1	1.21
900	91500	530000	150	FWP-900A	1	6.60
1000	120000	600000	170	FWP-1000A	1	6.60
1200	195000	1100000	190	FWP-1200A	1	6.60



North American Style

FWJ 1000V

Voltage Rating: 1000V AC/800V DC (Ampere ratings 35-200 and 500-600 rated up to 800V DC)

Interrupting Rating: 25kA for 35-200A,
100kA for 250-600A

Agency Approvals:

UL Recognition through 600 amperes only, Std. 248-13

Watts loss provided at rated current.



CE CE logo denotes compliance with European Union Low Voltage Directive (50-1000V AC, 75-1500V DC). Refer to BIF document #8002 or contact Bussmann Application Engineering at 636-527-1270 for more information.

Electrical Characteristics

Ordering Information

Rated Current RMS-Amps	I ² t (A ² SEC) @ 100kA		Watts Loss	Part Number	Carton Qty.	Carton Weight (lbs)
	Pre-arc	Clearing at 130V				
35	210	2000	7	FWJ-35A	10	4.18
40	300	2500	8	FWJ-40A	10	4.18
50	470	3500	10	FWJ-50A	10	4.18
60	670	5000	11	FWJ-60A	10	4.18
70	1100	6900	12	FWJ-70A	10	4.18
80	1550	9700	13	FWJ-80A	10	4.18
90	1900	12000	14	FWJ-90A	10	4.18
100	2800	17500	15	FWJ-100A	10	4.18
125	4800	35000	16	FWJ-125A	1	4.40
150	6300	45000	25	FWJ-150A	1	4.40
175	7500	65000	30	FWJ-175A	1	4.40
200	11700	80000	32	FWJ-200A	1	4.40
250	9000	50000	50	FWJ-250A	1	4.84
300	15000	80000	56	FWJ-300A	1	4.84
350	22000	120000	62	FWJ-350A	1	4.84
400	32000	180000	67	FWJ-400A	1	4.84
500	28500	155000	95	FWJ-500A	1	4.84
600	46500	260000	105	FWJ-600A	1	4.84
800	87000	500000	182	FWJ-800A	1	5.28
1000	190000	1100000	206	FWJ-1000A	1	5.28
1200	370000	2100000	240	FWJ-1200A	1	5.28
1400	470000	2700000	248	FWJ-1400A	1	5.28
1600	700000	4000000	267	FWJ-1600A	1	5.28
1800	925000	5300000	239	FWJ-1800A	1	5.28
2000	1330000	7600000	244	FWJ-2000A	1	5.28



North American Style Fuseblocks

Modular Style

Bussmann offers a comprehensive line of fuse bases that provide the user with design and manufacturing flexibility. Two identical half bases make up a Buss Modular fuse base. These “split” units can be panel mounted any distance apart to accommodate any length fuse.

Stud Type

The simpler design is the C5268 Series Modular fuse base. With this design, the fuse terminal and cable (with termination) are mounted on the same stud, minimizing labor needed for installation. The stud Type Base is available in the configuration shown in the table below. (Must order 2 pieces per fuse, they do not come in pairs.)

Part No.	Stud Heights	Stud Dia. & Threads
C5268-1	1.00"	9/16-18
C5268-2	1.75"	9/16-18
C5268-3	0.75"	9/16-18
C5268-4	1.00"	1/4-20
C5268-5	1.75"	1/4-20



Connector Type

Bussmann also offers a modular style fuse base that utilizes a tin plated connector (for wire termination and heat dissipation) and a plated steel stud (for fuse mounting). The connector type fuse base is available in the configurations shown below. Consult Bussmann for additional product details. (Order 1 piece per fuse, parts come in pairs.)

Modular Base Style	Max. Voltage	Max. Fuse Current Rating
BH-0 Series	700V	100A
BH-1 Series	2500V	400A
BH-2 Series	5000V	400A
BH-3 Series	1250V	700A

See page 85.



Fixed Center Base Style

Bussmann offers a comprehensive line of fixed mount style fuse bases under the trademark TRON® Rectifier Fuseblocks. The cable and fuse connections are similar to the Stud Type fuse base — both are mounted on the same stud. Consult Bussmann for complete product details.



CE CE logo denotes compliance with European Union Low Voltage Directive (50-1000V AC, 75-1500V DC). Refer to BIF document #8002 or contact Bussmann Application Engineering at 636-527-1270 for more information.



European Style Square Body—General Information



Voltage Rating

690 Volt AC	10 to 7500 Amperes
1250 Volt AC	50 to 1400 Amperes

All Bussmann European Style fuses are tested to IEC 60269, Part 4. This standard requires a test voltage which is 10% higher than the rated voltage. In North America, fuses are required to clear only their rated voltage.

Characteristics

Designed and tested to:

- IEC 60269: Part 4
- UL Recognized
- Minimal energy let-thru (I²t)
- Low operating temperature
- Low Watts loss

General Information

Each European Style fuse is available with a number of different end fittings. Options include:

- DIN 43 653
- North American Slotted Blade
- DIN 43 620
- Flush End (Metric/U.S.)
- French Style

Accessories

European Style fuses are available with three different open fuse indicator systems. Options include visual indication and indication utilizing a microswitch. Fuseblocks are also available for most applications.



European Style Square Body

DIN 43 653—10-400 Amps.

Voltage Rating: 690V (IEC/UL)

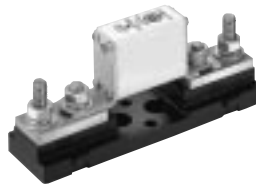
Interrupting Rating: 300kA RMS Symmetrical (estimated)

UL Recognized, Std. 248-13

Watts loss provided at rated current.

Microswitch indicator ordered separately.

See bottom of page 138.



CE CE logo denotes compliance with European Union Low Voltage Directive (50-1000V AC, 75-1500V DC). Refer to BIF document #8002 or contact Bussmann Application Engineering at 636-527-1270 for more information.

Electrical Characteristics

Ordering Information

Size	Rated Current RMS-Amps	I ² t (A ² s)		Watts Loss	Protection Class	-U/80 Without Indicator	-/80 Visual Indicator	-TN/80 Type T Indicator for Micro	Carton Qty.	Carton Weight (Kg)
		Pre-arc	Clearing at 660V							
000	10	3.8	25.5	3.0	gR	170M1308*	170M1358*	170M1408*	10	1.34
	16	7.2	48	5.5	gR	170M1309*	170M1359*	170M1409*	10	1.34
	20	11.5	78	7	gR	170M1310*	170M1360*	170M1410*	10	1.34
	25	19	130	9	gR	170M1311*	170M1361*	170M1411*	10	1.34
	32	40	270	10	gR	170M1312*	170M1362*	170M1412*	10	1.34
	40	69	460	12	gR	170M1313*	170M1363*	170M1413*	10	1.34
	50	115	770	15	gR	170M1314*	170M1364*	170M1414*	10	1.34
	63	215	1450	16	gR	170M1315*	170M1365*	170M1415*	10	1.34
	80	380	2550	19	aR	170M1316*	170M1366*	170M1416*	10	1.34
	100	695	4650	24	aR	170M1317*	170M1367*	170M1417*	10	1.34
	125	1200	8500	28	aR	170M1318*	170M1368*	170M1418*	10	1.34
	160	2300	16000	32	aR	170M1319*	170M1369*	170M1419*	10	1.34
	200	4200	28000	37	aR	170M1320*	170M1370*	170M1420*	10	1.34
	250	7750	51500	42	aR	170M1321*	170M1371*	170M1421*	10	1.34
	315	12000	80500	52	aR	170M1322*	170M1372*	170M1422*	10	1.34
00	25	19	130	6	gR	—	170M2608	170M2658	5	1.05
	32	28.5	195	7	gR	—	170M2609	170M2659	5	1.05
	40	50	360	9	gR	—	170M2610	170M2660	5	1.05
	50	95	640	10	gR	—	170M2611	170M2661	5	1.05
	63	170	1200	12	gR	—	170M2612	170M2662	5	1.05
	80	310	2100	15	gR	—	170M2613	170M2663	5	1.05
	100	620	4150	20	aR	—	170M2614	170M2664	5	1.05
	125	1000	6950	25	aR	—	170M2615	170M2665	5	1.05
	160	1900	13000	30	aR	—	170M2616	170M2666	5	1.05
	200	3400	23000	35	aR	—	170M2617	170M2667	5	1.05
	250	6250	42000	45	aR	—	170M2618	170M2668	5	1.05
	315	10000	68500	55	aR	—	170M2619	170M2669	5	1.05
	350	13500	91500	60	aR	—	170M2620	170M2670	5	1.05
	400	18000	125000	70	aR	—	170M2621	170M2671	5	1.05

*UL Recognized.



European Style Square Body

DIN 43 653—40-2000 Amps.

Voltage Rating: 690V (IEC) & 700V (UL)

Interrupting Rating: 300kA RMS Symmetrical (estimated)

Agency Approvals:

UL Recognized, Std. 248-13 **CE**

Watts loss provided at rated current.

Microswitch indicator ordered separately. See bottom of page 138.



Electrical Characteristics

Ordering Information

Size	Rated Current RMS-Amps	I ² t (A ² s)		Watts Loss	-/80 Visual Indicator	-TN/80 Type T Indicator for Micro	-/110 Visual Indicator	-TN/110 Type T Indicator for Micro	Carton Qty.	Carton Weight (Kg)	
		Pre-arc	Clearing at 660V								
1*	40	40	270	9	170M3008*	170M3058*	170M3158*	170M3208*	5	1.50	
	50	77	515	11	170M3009*	170M3059*	170M3159*	170M3209*	5	1.50	
	63	115	770	14	170M3010*	170M3060*	170M3160*	170M3210*	5	1.50	
	80	185	1250	18	170M3011*	170M3061*	170M3161*	170M3211*	5	1.50	
	100	360	2450	21	170M3012*	170M3062*	170M3162*	170M3212*	5	1.50	
	125	550	3700	26	170M3013*	170M3063*	170M3163*	170M3213*	5	1.50	
	160	1100	7500	30	170M3014*	170M3064*	170M3164*	170M3214*	5	1.50	
	200	2200	15000	35	170M3015*	170M3065*	170M3165*	170M3215*	5	1.50	
	250	4200	28500	40	170M3016*	170M3066*	170M3166*	170M3216*	5	1.50	
	315	7000	46500	50	170M3017*	170M3067*	170M3167*	170M3217*	5	1.50	
	350	10000	68500	55	170M3018*	170M3068*	170M3168*	170M3218*	5	1.50	
	400	15000	105000	60	170M3019*	170M3069*	170M3169*	170M3219*	5	1.50	
	450	21000	140000	65	170M3020*	170M3070*	170M3170*	170M3220*	5	1.50	
	500	27000	180000	70	170M3021*	170M3071*	170M3171*	170M3221*	5	1.50	
	550	34000	230000	75	170M3022*	170M3072*	170M3172*	170M3222*	5	1.50	
	630	48500	325000	80	170M3023*	170M3073*	170M3173*	170M3223*	5	1.50	
	1	200	1650	11500	45	170M4008*	170M4058*	170M4158*	170M4208*	3	1.29
		250	3100	21000	55	170M4009*	170M4059*	170M4159*	170M4209*	(-/80)	—
315		6200	42000	58	170M4010*	170M4060*	170M4160*	170M4210*	—	—	
350		8500	59000	60	170M4011*	170M4061*	170M4161*	170M4211*	2	0.94	
400		13500	91500	65	170M4012*	170M4062*	170M4162*	170M4212*	(-/110)	—	
450		17000	120000	70	170M4013*	170M4063*	170M4163*	170M4213*	—	—	
500		25000	170000	72	170M4014*	170M4064*	170M4164*	170M4214*	—	—	
550		34000	230000	75	170M4015*	170M4065*	170M4165*	170M4215*	—	—	
630		52000	350000	80	170M4016*	170M4066*	170M4166*	170M4216*	—	—	
700		69500	465000	85	170M4017*	170M4067*	170M4167*	170M4217*	—	—	
800		105000	725000	95	170M4018*	170M4068*	170M4168*	170M4218*	—	—	
†900		155000	†850000	100	170M4019	170M4069	170M4169	170M4219	—	—	
2	400	11000	74000	65	170M5008*	170M5058*	170M5158*	170M5208*	2	1.20	
	450	15500	105000	70	170M5009*	170M5059*	170M5159*	170M5209*	2	1.20	
	500	21500	145000	75	170M5010*	170M5060*	170M5160*	170M5210*	2	1.20	
	550	28000	190000	80	170M5011*	170M5061*	170M5161*	170M5211*	2	1.20	
	630	41000	275000	90	170M5012*	170M5062*	170M5162*	170M5212*	2	1.20	
	700	60500	405000	95	170M5013*	170M5063*	170M5163*	170M5213*	2	1.20	
	800	86000	575000	105	170M5014*	170M5064*	170M5164*	170M5214*	2	1.20	
	900	125000	840000	110	170M5015*	170M5065*	170M5165*	170M5215*	2	1.20	
	1000	180000	1250000	115	170M5016*	170M5066*	170M5166*	170M5216*	2	1.20	
	1100	245000	1600000	120	170M5017*	170M5067*	170M5167*	170M5217*	2	1.20	
	1250	365000	2400000	130	170M5018*	170M5068*	170M5168*	170M5218*	2	1.20	
	500	14000	95000	95	170M6008*	170M6058*	170M6158*	170M6208*	2	1.66	
3	550	19500	135000	100	170M6009*	170M6059*	170M6159*	170M6209*	(-/80)	—	
	630	31000	210000	105	170M6010*	170M6060*	170M6160*	170M6210*	—	—	
	700	44500	300000	110	170M6011*	170M6061*	170M6161*	170M6211*	1	0.89	
	800	69500	465000	115	170M6012*	170M6062*	170M6162*	170M6212*	(-/110)	—	
	900	100000	670000	120	170M6013*	170M6063*	170M6163*	170M6213*	—	—	
	1000	140000	945000	125	170M6014*	170M6064*	170M6164*	170M6214*	—	—	
	1100	190000	1300000	130	170M6015*	170M6065*	170M6165*	170M6215*	—	—	
	1250	290000	1950000	140	170M6016*	170M6066*	170M6166*	170M6216*	—	—	
	1400	370000	2450000	155	170M6017*	170M6067*	170M6167*	170M6217*	—	—	
	1500	460000	3100000	160	170M6018*	170M6068*	170M6168*	170M6218*	—	—	
	1600	580000	3900000	160	170M6019*	170M6069*	170M6169	170M6219	—	—	
	†1800	880000	†5250000	165	170M6020	170M6070	170M6170	170M6220	—	—	
‡2000	1150000	‡6350000	175	170M6021	170M6071	170M6171	170M6221	—	—		

*UL Recognized. Rated voltage †600V ‡550V



European Style Square Body

DIN 43 653—40-2000 Amps.

Voltage Rating: 690V (IEC) & 700V (UL)

Interrupting Rating: 300kA RMS Symmetrical (estimated)

Agency Approvals:

UL Recognized, Std. 248-13 **CE**

Watts loss provided at rated current.

Microswitch indicator ordered separately. See bottom of page 138.



Electrical Characteristics

Ordering Information

Size	Rated Current RMS-Amps	I _t (A ² s)		Watts Loss	-KN/80 Type K Indicator for Micro	-KN/110 Type K Indicator for Micro	Carton Qty.	Carton Weight (Kg)
		Pre-arc	Clearing at 660V					
1*	40	40	270	9	170M3108*	170M3258*	5	1.60
	50	77	515	11	170M3109*	170M3259*	5	1.60
	63	115	770	14	170M3110*	170M3260*	5	1.60
	80	185	1250	18	170M3111*	170M3261*	5	1.60
	100	360	2450	21	170M3112*	170M3262*	5	1.60
	125	550	3700	26	170M3113*	170M3263*	5	1.60
	160	1100	7500	30	170M3114*	170M3264*	5	1.60
	200	2200	15000	35	170M3115*	170M3265*	5	1.60
	250	4200	28500	40	170M3116*	170M3266*	5	1.60
	315	7000	46500	50	170M3117*	170M3267*	5	1.60
	350	10000	68500	55	170M3118*	170M3268*	5	1.60
	400	15000	105000	60	170M3119*	170M3269*	5	1.60
	450	21000	140000	65	170M3120*	170M3270*	5	1.60
	500	27000	180000	70	170M3121*	170M3271*	5	1.60
	550	34000	230000	75	170M3122*	170M3272*	5	1.60
	630	48500	325000	80	170M3123*	170M3273*	5	1.60
1	200	1650	11500	45	170M4108*	170M4258*	3	1.38
	250	3100	21000	55	170M4109*	170M4259*	(-/80)	—
	315	6200	42000	58	170M4110*	170M4260*	—	—
	350	8500	59000	60	170M4111*	170M4261*	2	1.00
	400	13500	91500	65	170M4112*	170M4262*	(-/110)	—
	450	17000	120000	70	170M4113*	170M4263*	—	—
	500	25000	170000	72	170M4114*	170M4264*	—	—
	550	34000	230000	75	170M4115*	170M4265*	—	—
	630	52000	350000	80	170M4116*	170M4266*	—	—
	700	69500	465000	85	170M4117*	170M4267*	—	—
	800	105000	725000	95	170M4118*	170M4268*	—	—
†900	155000	†850000	100	170M4119	170M4269	—	—	
2	400	11000	74000	65	170M5108*	170M5258*	2	1.26
	450	15500	105000	70	170M5109*	170M5259*	2	1.26
	500	21500	145000	75	170M5110*	170M5260*	2	1.26
	550	28000	190000	80	170M5111*	170M5261*	2	1.26
	630	41000	275000	90	170M5112*	170M5262*	2	1.26
	700	60500	405000	95	170M5113*	170M5263*	2	1.26
	800	86000	575000	105	170M5114*	170M5264*	2	1.26
	900	125000	840000	110	170M5115*	170M5265*	2	1.26
	1000	180000	1250000	115	170M5116*	170M5266*	2	1.26
	1100	245000	1600000	120	170M5117*	170M5267*	2	1.26
	1250	365000	2400000	130	170M5118*	170M5268*	2	1.26
	3	500	14000	95000	95	170M6108*	170M6258*	1
550		19500	135000	100	170M6109*	170M6259*	1	0.92
630		31000	210000	105	170M6110*	170M6260*	1	0.92
700		44500	300000	110	170M6111*	170M6261*	1	0.92
800		69500	465000	115	170M6112*	170M6262*	1	0.92
900		100000	670000	120	170M6113*	170M6263*	1	0.92
1000		140000	945000	125	170M6114*	170M6264*	1	0.92
1100		190000	1300000	130	170M6115*	170M6265*	1	0.92
1250		290000	1950000	140	170M6116*	170M6266*	1	0.92
1400		370000	2450000	155	170M6117*	170M6267*	1	0.92
1500		460000	3100000	160	170M6118*	170M6268*	1	0.92
1600		580000	3900000	160	170M6119*	170M6269*	1	0.92
†1800		880000	†5250000	165	170M6120	170M6270	1	0.92
‡2000		1150000	‡6350000	175	170M6121	170M6271	1	0.92

*UL Recognized. Rated voltage †600V ‡550V



European Style Square Body

DIN 43 653—50-1400 Amps.

Voltage Rating: 1250V (IEC)/1300V (UL)

Interrupting Rating: 300kA RMS Symmetrical (estimated)

Agency Approvals:

UL Recognized, Std. 248-13 

Watts loss provided at rated current.

Microswitch indicator ordered separately. See bottom of page 138.



Electrical Characteristics

Ordering Information

Size	Rated Current RMS-Amps	I _t (A·s)			Watts Loss	-/110 Visual Indicator	-TN/110 Type T Indicator for Micro	Carton Qty.	Carton Weight (Kg)
		Pre-arc	Clearing at 1000V	Clearing at 1250V					
1*	50	135	815	1100	15	170M3138*	170M3188*	5	1.90
	63	215	1300	1750	20	170M3139*	170M3189*	5	1.90
	80	420	2500	3350	25	170M3140*	170M3190*	5	1.90
	100	750	4450	5950	30	170M3141*	170M3191*	5	1.90
	125	1450	9000	11500	35	170M3142*	170M3192*	5	1.90
	160	2600	16000	21000	40	170M3143*	170M3193*	5	1.90
	200	5150	31000	41000	45	170M3144*	170M3194*	5	1.90
	250	9200	54500	73000	55	170M3145*	170M3195*	5	1.90
	315	18500	115000	150000	60	170M3146*	170M3196*	5	1.90
	350	27000	165000	220000	65	170M3147*	170M3197*	5	1.90
	400	53000	265000	335000	70	170M3148*	170M3198*	5	1.90
	160	1900	11500	15500	45	170M4138*	170M4188*	2	1.18
200	3800	22500	30000	50	170M4139*	170M4189*	2	1.18	
250	7750	46000	61500	60	170M4140*	170M4190*	2	1.18	
315	15000	90000	120000	65	170M4141*	170M4191*	2	1.18	
350	20000	125000	165000	70	170M4142*	170M4192*	2	1.18	
400	29500	175000	235000	75	170M4143*	170M4193*	2	1.18	
450	42000	250000	335000	80	170M4144*	170M4194*	2	1.18	
500	69500	340000	435000	85	170M4145*	170M4195*	2	1.18	
550	95000	465000	590000	95	170M4146*	170M4196*	2	1.18	
†630	130000	†660000	—	100	170M4147	170M4197	2	1.18	
250	6500	38500	51500	65	170M5138*	170M5188*	2	1.58	
280	9350	55500	74500	70	170M5139*	170M5189*	2	1.58	
315	13000	77500	105000	75	170M5140*	170M5190*	2	1.58	
350	16500	97500	135000	80	170M5141*	170M5191*	2	1.58	
400	23000	140000	180000	85	170M5142*	170M5192*	2	1.58	
450	34000	205000	270000	90	170M5143*	170M5193*	2	1.58	
500	48000	285000	380000	95	170M5144*	170M5194*	2	1.58	
550	62000	370000	495000	100	170M5145*	170M5195*	2	1.58	
630	115000	575000	730000	110	170M5146*	170M5196*	2	1.58	
700	160000	795000	1050000	115	170M5147*	170M5197*	2	1.58	
800	245000	1200000	1550000	120	170M5148*	170M5198*	2	1.58	
†900	360000	†1750000	—	125	170M5149	170M5199	2	1.58	
†1000	480000	†2350000	—	135	170M5150	170M5200	2	1.58	
315	9500	58000	77500	85	170M6138*	170M6188*	1	1.23	
350	13500	81500	110000	90	170M6139*	170M6189*	1	1.23	
400	19500	120000	160000	95	170M6140*	170M6190*	1	1.23	
450	31000	185000	245000	100	170M6141*	170M6191*	1	1.23	
500	39000	235000	310000	105	170M6142*	170M6192*	1	1.23	
550	55000	325000	435000	110	170M6143*	170M6193*	1	1.23	
630	83500	495000	665000	115	170M6144*	170M6194*	1	1.23	
700	115000	705000	940000	120	170M6145*	170M6195*	1	1.23	
800	205000	995000	1300000	125	170M6146*	170M6196*	1	1.23	
900	305000	1500000	1900000	130	170M6147*	170M6197*	1	1.23	
1000	450000	2150000	2750000	135	170M6148*	170M6198*	1	1.23	
1100	575000	2800000	3600000	140	170M6149*	170M6199*	1	1.23	
†1250	810000	†3950000	—	145	170M6150	170M6200	1	1.23	
†1400	1250000	†6000000	—	150	170M6151	170M6201	1	1.23	

*UL Recognized. Rated voltage †1100V



European Style Square Body

DIN 43 653—50-1400 Amps.

Voltage Rating: 1250V (IEC)/1300V (UL)

Interrupting Rating: 300kA RMS Symmetrical (estimated)

Agency Approvals:

UL Recognized, Std. 248-13 **CE**

Watts loss provided at rated current.

Microswitch indicator ordered separately. See bottom of page 138.



Electrical Characteristics

Ordering Information

Size	Rated Current RMS-Amps	I _t (A ² s)			Watts Loss	-KN/110 Type K Indicator for Micro	Carton Qty.	Carton Weight (Kg)	
		Pre-arc	Clearing at 1000V	Clearing at 1250V					
1*	50	135	815	1100	15	170M3238*	2	0.84	
	63	215	1300	1750	20	170M3239*	2	0.84	
	80	420	2500	3350	25	170M3240*	2	0.84	
	100	750	4450	5950	30	170M3241*	2	0.84	
	125	1450	9000	11500	35	170M3242*	2	0.84	
	160	2600	16000	21000	40	170M3243*	2	0.84	
	200	5150	31000	41000	45	170M3244*	2	0.84	
	250	9200	54500	73000	55	170M3245*	2	0.84	
	315	18500	115000	150000	60	170M3246*	2	0.84	
	350	27000	165000	220000	65	170M3247*	2	0.84	
	400	53000	265000	335000	70	170M3248*	2	0.84	
	1	160	1900	11500	15500	45	170M4238*	2	1.26
200		3800	22500	30000	50	170M4239*	2	1.26	
250		7750	46000	61500	60	170M4240*	2	1.26	
315		15000	90000	120000	65	170M4241*	2	1.26	
350		20000	125000	165000	70	170M4242*	2	1.26	
400		29500	175000	235000	75	170M4243*	2	1.26	
450		42000	250000	335000	80	170M4244*	2	1.26	
500		69500	340000	435000	85	170M4245*	2	1.26	
550		95000	465000	590000	95	170M4246*	2	1.26	
†630		130000	†660000	—	100	170M4247	2	1.26	
2		250	6500	38500	51500	65	170M5238*	2	1.66
		280	9350	55500	74500	70	170M5239*	2	1.66
	315	13000	77500	105000	75	170M5240*	2	1.66	
	350	16500	97500	135000	80	170M5241*	2	1.66	
	400	23000	140000	180000	85	170M5242*	2	1.66	
	450	34000	205000	270000	90	170M5243*	2	1.66	
	500	48000	285000	380000	95	170M5244*	2	1.66	
	550	62000	370000	495000	100	170M5245*	2	1.66	
	630	115000	575000	730000	110	170M5246*	2	1.66	
	700	160000	795000	1050000	115	170M5247*	2	1.66	
	800	245000	1200000	1550000	120	170M5248*	2	1.66	
	†900	360000	†1750000	—	125	170M5249	2	1.66	
†1000	480000	†2350000	—	135	170M5250	2	1.66		
3	315	9500	58000	77500	85	170M6238*	1	1.27	
	350	13500	81500	110000	90	170M6239*	1	1.27	
	400	19500	120000	160000	95	170M6240*	1	1.27	
	450	31000	185000	245000	100	170M6241*	1	1.27	
	500	39000	235000	310000	105	170M6242*	1	1.27	
	550	55000	325000	435000	110	170M6243*	1	1.27	
	630	83500	495000	665000	115	170M6244*	1	1.27	
	700	115000	705000	940000	120	170M6245*	1	1.27	
	800	205000	995000	1300000	125	170M6246*	1	1.27	
	900	305000	1500000	1900000	130	170M6247*	1	1.27	
	1000	450000	2150000	2750000	135	170M6248*	1	1.27	
	1100	575000	2800000	3600000	140	170M6249*	1	1.27	
†1250	810000	†3950000	—	145	170M6250	1	1.27		
†1400	1250000	†6000000	—	150	170M6251	1	1.27		

*UL Recognized. Rated voltage †1100V



European Style Square Body

DIN 43 620—10-315 Amps.

Voltage Rating: 690V (IEC/UL)

Interrupting Rating: 300kA RMS Symmetrical (estimated)

Agency Approvals:

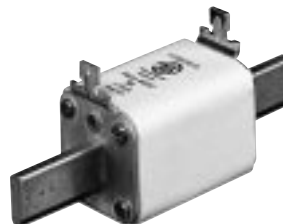
UL Recognized, Std. 248-13

Rated Current: The rated current of this fuse range has been given with copper conductors that have a current density of 1.3 A/mm² (IEC 60269-4). For conductor cross section according to IEC 60269-1, the fuses with a rated current higher than 125A must be derated. Please contact Bussmann for application assistance.

Watts loss provided at rated current.

Microswitch indicator ordered separately.

See bottom of page 138.



CE CE logo denotes compliance with European Union Low Voltage Directive (50-1000V AC, 75-1500V DC). Refer to BIF document #8002 or contact Bussmann Application Engineering at 636-527-1270 for more information.

Electrical Characteristics

Ordering Information

Size	Rated Current RMS-Amps	I _t (A ² s)		Watts Loss	Protection Class	DIN 000 Type T Indicator for Micro	Carton Qty.	Carton Weight (Kg)
		Pre-arc	Clearing at 660V					
	10	3.8	25.5	3.0	gR	170M1558*	10	1.30
	16	7.2	48	5.5	gR	170M1559*	10	1.30
	20	11.5	78	7	gR	170M1560*	10	1.30
	25	19	130	9	gR	170M1561*	10	1.30
	32	40	270	10	gR	170M1562*	10	1.30
	40	69	460	12	gR	170M1563*	10	1.30
000	50	115	770	15	gR	170M1564*	10	1.30
	63	215	1450	16	gR	170M1565*	10	1.30
	80	380	2550	19	aR	170M1566*	10	1.30
	100	695	4650	24	aR	170M1567*	10	1.30
	125	1200	8500	28	aR	170M1568*	10	1.30
	160	2300	16000	32	aR	170M1569*	10	1.30
	200	4200	28000	37	aR	170M1570*	10	1.30
	250	7750	51500	42	aR	170M1571*	10	1.30
	315	12000	80500	52	aR	170M1572*	10	1.30

*UL Recognized.



European Style Square Body

DIN 43 620—40-1000 Amps.

Voltage Rating: 690V (IEC)/700V (UL)

Interrupting Rating: 300kA RMS Symmetrical (estimated)

Agency Approvals:

UL Recognized, Std. 248-13

Rated Current: The rated current of this fuse range has been given with copper conductors that have a current density of 1.3 A/mm² (IEC 60269-4). For conductor cross section according to IEC 60269-1, the fuses with a rated current higher than 125A must be derated. Please contact Bussmann for application assistance.

Watts loss provided at rated current.

Microswitch indicator ordered separately.

See bottom of page 138.



CE CE logo denotes compliance with European Union Low Voltage Directive (50-1000V AC, 75-1500V DC). Refer to BIF document #8002 or contact Bussmann Application Engineering at 636-527-1270 for more information.

Electrical Characteristics

Ordering Information

Size	Rated Current RMS-Amps	I _t (A ² s)		Watts Loss	DIN Type T Indicator for Micro	Carton Qty.	Carton Weight (Kg)
		Pre-arc	Clearing at 660V				
1*	40	40	270	9	170M3808*	5	1.85
	50	77	515	11	170M3809*	5	1.85
	63	115	770	14	170M3810*	5	1.85
	80	185	1250	18	170M3811*	5	1.85
	100	360	2450	21	170M3812*	5	1.85
	125	550	3700	26	170M3813*	5	1.85
	160	1100	7500	30	170M3814*	5	1.85
	200	2200	15000	35	170M3815*	5	1.85
	250	4200	28500	40	170M3816*	5	1.85
	315	7000	46500	50	170M3817*	5	1.85
	350	10000	68500	55	170M3818*	5	1.85
	400	15000	105000	60	170M3819*	5	1.85
2	400	11000	74000	65	170M5808*	5	3.00
	450	15500	105000	70	170M5809*	5	3.00
	500	21500	145000	75	170M5810*	5	3.00
	550	28000	190000	80	170M5811*	5	3.00
	630	41000	275000	90	170M5812*	5	3.00
	700	60500	405000	95	170M5813*	5	3.00
3	500	14000	95000	95	170M6808*	1	1.15
	550	19500	135000	100	170M6809*	1	1.15
	630	31000	210000	105	170M6810*	1	1.15
	700	44500	300000	110	170M6811*	1	1.15
	800	69500	465000	115	170M6812*	1	1.15
	900	100000	670000	120	170M6813*	1	1.15
	1000	140000	945000	125	170M6814*	1	1.15

*UL Recognized.



European Style Square Body

Flush End Contact 25-400 Amps.

Voltage Rating: 690V (IEC)

Interrupting Rating: 300kA RMS Symmetrical (estimated)

Watts loss provided at rated current.

Microswitch indicator ordered separately.

See bottom of page 138.



CE CE logo denotes compliance with European Union Low Voltage Directive (50-1000V AC, 75-1500V DC). Refer to BIF document #8002 or contact Bussmann Application Engineering at 636-527-1270 for more information.

Electrical Characteristics

Ordering Information

Size	Rated Current RMS-Amps	I ² t (A ² s)		Watts Loss	Protection Class	00B/60 Visual Indicator	00BTN/60 Type T Indicator for Microswitch	Carton Qty.	Carton Weight (Kg)
		Pre-arc	Clearing at 660V						
00	25	19	130	6	gR	170M2708	170M2758	5	1.35
	32	28.5	195	7	gR	170M2709	170M2759	5	1.35
	40	50	360	9	gR	170M2710	170M2760	5	1.35
	50	95	640	10	gR	170M2711	170M2761	5	1.35
	63	170	1200	12	gR	170M2712	170M2762	5	1.35
	80	310	2100	15	gR	170M2713	170M2763	5	1.35
	100	620	4150	20	aR	170M2714	170M2764	5	1.35
	125	1000	6950	25	aR	170M2715	170M2765	5	1.35
	160	1900	13000	30	aR	170M2716	170M2766	5	1.35
	200	3400	23000	35	aR	170M2717	170M2767	5	1.35
	250	6250	42000	45	aR	170M2718	170M2768	5	1.35
	315	10000	68500	55	aR	170M2719	170M2769	5	1.35
	350	13500	91500	60	aR	170M2720	170M2770	5	1.35
	400	18000	125000	70	aR	170M2721	170M2771	5	1.35



European Style Square Body

Flush End Contact 40-2000 Amps.

Voltage Rating: 690V (IEC) 700V (UL)

Interrupting Rating: 300kA RMS Symmetrical (estimated)

Agency Approvals:

UL Recognized, Std. 248-13 CE

Watts loss provided at rated current.

Microswitch indicator ordered separately. See bottom of page 138.



Electrical Characteristics

Ordering Information

Size	Rated Current RMS-Amps	I ² t (A ² s)		Watts Loss	-B/- Visual Indicator	-BKN/ Type K Indicator for Micro	-G/- Visual Indicator	-GKN/ Type K Indicator for Micro	Carton Qty.	Carton Weight (Kg)
		Pre-arc	Clearing at 660V							
1*	40	40	270	9	170M3408*	170M3458*	170M3508*	170M3558*	10	2.40
	50	77	515	11	170M3409*	170M3459*	170M3509*	170M3559*	(-B/-)	—
	63	115	770	14	170M3410*	170M3460*	170M3510*	170M3560*	—	—
	80	185	1250	18	170M3411*	170M3461*	170M3511*	170M3561*	10	2.40
	100	360	2450	21	170M3412*	170M3462*	170M3512*	170M3562*	(-G/-)	—
	125	550	3700	26	170M3413*	170M3463*	170M3513*	170M3563*	—	—
	160	1100	7500	30	170M3414*	170M3464*	170M3514*	170M3564*	6	1.62
	200	2200	15000	35	170M3415*	170M3465*	170M3515*	170M3565*	(-BKN/-)	—
	250	4200	28500	40	170M3416*	170M3466*	170M3516*	170M3566*	—	—
	315	7000	46500	50	170M3417*	170M3467*	170M3517*	170M3567*	—	—
	350	10000	68500	55	170M3418*	170M3468*	170M3518*	170M3568*	6	1.62
	400	15000	105000	60	170M3419*	170M3469*	170M3519*	170M3569*	(-GKN/-)	—
	450	21000	140000	65	170M3420*	170M3470*	170M3520*	170M3570*	—	—
	500	27000	180000	70	170M3421*	170M3471*	170M3521*	170M3571*	—	—
	550	34000	230000	75	170M3422*	170M3472*	170M3522*	170M3572*	—	—
	630	48500	325000	80	170M3423*	170M3473*	170M3523*	170M3573*	—	—
1	200	1650	11500	45	170M4408*	170M4458*	170M4508*	170M4558*	6	2.40
	250	3100	21000	55	170M4409*	170M4459*	170M4509*	170M4559*	6	2.40
	315	6200	42000	58	170M4410*	170M4460*	170M4510*	170M4560*	6	2.40
	350	8500	59000	60	170M4411*	170M4461*	170M4511*	170M4561*	6	2.40
	400	13500	91500	65	170M4412*	170M4462*	170M4512*	170M4562*	6	2.40
	450	17000	120000	70	170M4413*	170M4463*	170M4513*	170M4563*	6	2.40
	500	25000	170000	72	170M4414*	170M4464*	170M4514*	170M4564*	6	2.40
	550	34000	230000	75	170M4415*	170M4465*	170M4515*	170M4565*	6	2.40
	630	52000	350000	80	170M4416*	170M4466*	170M4516*	170M4566*	6	2.40
	700	69500	465000	85	170M4417*	170M4467*	170M4517*	170M4567*	6	2.40
2	800	105000	725000	95	170M4418*	170M4468*	170M4518*	170M4568*	6	2.40
	±900	155000	±850000	100	170M4419	170M4469	170M4519	170M4569	6	2.40
	400	11000	74000	65	170M5408*	170M5458*	170M5508*	170M5558*	6	3.30
	450	15500	105000	70	170M5409*	170M5459*	170M5509*	170M5559*	6	3.30
	500	21500	145000	75	170M5410*	170M5460*	170M5510*	170M5560*	6	3.30
	550	28000	190000	80	170M5411*	170M5461*	170M5511*	170M5561*	6	3.30
	630	41000	275000	90	170M5412*	170M5462*	170M5512*	170M5562*	6	3.30
	700	60500	405000	95	170M5413*	170M5463*	170M5513*	170M5563*	6	3.30
	800	86000	575000	105	170M5414*	170M5464*	170M5514*	170M5564*	6	3.30
	900	125000	840000	110	170M5415*	170M5465*	170M5515*	170M5565*	6	3.30
3	1000	180000	1250000	115	170M5416*	170M5466*	170M5516*	170M5566*	6	3.30
	1100	245000	1600000	120	170M5417*	170M5467*	170M5517*	170M5567*	4	2.40
	1250	365000	2400000	130	170M5418*	170M5468*	170M5518*	170M5568*	4	2.40
	500	14000	95000	95	170M6408*	170M6458*	170M6508*	170M6558*	3	2.52
	550	19500	135000	100	170M6409*	170M6459*	170M6509*	170M6559*	3	2.52
	630	31000	210000	105	170M6410*	170M6460*	170M6510*	170M6560*	3	2.52
	700	44500	300000	110	170M6411*	170M6461*	170M6511*	170M6561*	3	2.52
	800	69500	465000	115	170M6412*	170M6462*	170M6512*	170M6562*	3	2.52
	900	100000	670000	120	170M6413*	170M6463*	170M6513*	170M6563*	3	2.52
	1000	140000	945000	125	170M6414*	170M6464*	170M6514*	170M6564*	3	2.52
3	1100	190000	1300000	130	170M6415*	170M6465*	170M6515*	170M6565*	3	2.52
	1250	290000	1950000	140	170M6416*	170M6466*	170M6516*	170M6566*	3	2.52
	1400	370000	2450000	155	170M6417*	170M6467*	170M6517*	170M6567*	3	2.52
	1500	460000	3100000	160	170M6418*	170M6468*	170M6518*	170M6568*	3	2.52
	1600	580000	3900000	160	170M6419*	170M6469*	170M6519*	170M6569*	2	1.82
	±1800	880000	±5250000	165	170M6420	170M6470	170M6520	170M6570	2	1.82
	±2000	1150000	±6350000	175	170M6421	170M6471	170M6521	170M6571	2	1.82

*UL Recognized. Rated voltage †600V ‡550V



European Style Square Body

Flush End Contact—1000-4000 Amps.

Voltage Rating: 690V (IEC)

Interrupting Rating: 300kA RMS Symmetrical (estimated)

Watts loss provided at rated current.

Microswitch indicator ordered separately.

See bottom of page 138.



CE CE logo denotes compliance with European Union Low Voltage Directive (50-1000V AC, 75-1500V DC). Refer to BIF document #8002 or contact Bussmann Application Engineering at 636-527-1270 for more information.

Electrical Characteristics

Ordering Information

Size	Rated Current RMS-Norm Cool.	Rated Current RMS-Liquid Cool.	I ² t (A ² s)		Watts Loss Norm. Cool.	Watts Loss Liquid Cool.	-B/- Visual Indicator	-BKN/- Type K Indicator for Micro	-G/- Visual Indicator	-GKN/- Type K Indicator for Micro	Carton Qty.	Carton Weight (Kg)
			Pre-arc	Clearing at 660V								
4	1000	1350	76000	505000	175	315	170M7058	170M7078	170M7098	170M7118	2	1.80
	1250	1700	145000	965000	195	355	170M7059	170M7079	170M7099	170M7119	2	1.80
	1400	1900	205000	1400000	205	375	170M7060	170M7080	170M7100	170M7120	2	1.80
	1600	2200	305000	2050000	220	405	170M7061	170M7081	170M7101	170M7121	2	1.80
	2000	2700	600000	3950000	245	445	170M7062	170M7082	170M7102	170M7122	2	1.80
	2500	3400	1200000	7800000	275	495	170M7063	170M7083	170M7103	170M7123	2	1.80
	3000	4100	2000000	13500000	305	555	170M7064	170M7084	170M7104	170M7124	2	1.80
	3500	4700	3250000	22000000	325	585	170M7065	170M7085	170M7105	170M7125	2	1.80
	†4000	†5400	4700000	†28000000	355	640	170M7066	170M7086	170M7106	170M7126	2	1.80

Rated voltage †600V.

Liq. Cool. - Liquid cooling. Temperature on the terminals not to exceed 60°C.



European Style Square Body

Flush End Contact—50-1400 Amps.

Voltage Rating: 1250V (IEC) 1300V (UL)

Interrupting Rating: 300kA RMS Symmetrical (estimated)

Agency Approvals:

UL Recognized, Std. 248-13 **CE**

Watts loss provided at rated current.

Microswitch indicator ordered separately. See bottom of page 138.



Electrical Characteristics

Ordering Information

Size	Rated Current RMS-Amps	I ^t (A ² s)			Watts Loss	-BKN/75	-BKN/80	-BKN/90	-GKN/75	-GKN/90
		Pre-arc	Clearing at 1000V	Clearing at 1250V		Type K Indicator for Micro	Type K Indicator for Micro	Type K Indicator for Micro	Type K Indicator for Micro	Type K Indicator for Micro
1*	50	135	815	1100	15	170M3388*	170M3438*	—	170M3488*	—
	63	215	1300	1750	20	170M3389*	170M3439*	—	170M3489*	—
	80	420	2500	3350	25	170M3390*	170M3440*	—	170M3490*	—
	100	750	4450	5950	30	170M3391*	170M3441*	—	170M3491*	—
	125	1450	9000	11500	35	170M3392*	170M3442*	—	170M3492*	—
	160	2600	16000	21000	40	170M3393*	170M3443*	—	170M3493*	—
	200	5150	31000	41000	45	170M3394*	170M3444*	—	170M3494*	—
	250	9200	54500	73000	55	170M3395*	170M3445*	—	170M3495*	—
	315	18500	115000	150000	60	170M3396*	170M3446*	—	170M3496*	—
	350	27000	165000	220000	65	170M3397*	170M3447*	—	170M3497*	—
400	53000	265000	335000	70	—	170M3448*	—	—	—	
1	160	1900	11500	15500	45	170M4388*	170M4438*	—	170M4488*	—
	200	3800	22500	30000	50	170M4389*	170M4439*	—	170M4489*	—
	250	7750	46000	61500	60	170M4390*	170M4440*	—	170M4490*	—
	315	15000	90000	120000	65	170M4391*	170M4441*	—	170M4491*	—
	350	20000	125000	165000	70	170M4392*	170M4442*	—	170M4492*	—
	400	29500	175000	235000	75	170M4393*	170M4443*	—	170M4493*	—
	450	42000	250000	335000	80	170M4394*	170M4444*	—	170M4494*	—
	500	69500	340000	435000	85	†170M4395	170M4445*	—	†170M4495	—
	550	95000	465000	590000	95	‡170M4396	170M4446*	—	‡170M4496	—
	630	130000	660000	—	100	‡170M4397	†170M4447	—	‡170M4497	—
2	250	6500	38500	51500	65	170M5388*	170M5438*	—	170M5588*	—
	280	9350	55500	74500	70	170M5389*	170M5439*	—	170M5589*	—
	315	13000	77500	105000	75	170M5390*	170M5440*	—	170M5590*	—
	350	16500	97500	135000	80	170M5391*	170M5441*	—	170M5591*	—
	400	23000	140000	180000	85	170M5392*	170M5442*	—	170M5592*	—
	450	34000	205000	270000	90	170M5393*	170M5443*	—	170M5593*	—
	500	48000	285000	380000	95	170M5394*	170M5444*	170M5494*	170M5594*	170M5644*
	550	62000	370000	495000	100	170M5395*	170M5445*	170M5495*	170M5595*	170M5645*
	630	115000	575000	730000	110	†170M5396	170M5446*	170M5496*	†170M5596	170M5646*
	700	160000	795000	1050000	115	‡170M5397	†170M5447	170M5497*	‡170M5597	170M5647*
800	245000	1200000	1550000	120	‡170M5398	‡170M5448	170M5498*	‡170M5598	170M5648*	
†900	360000	1750000	—	125	—	—	170M5499	—	170M5649*	
†1000	480000	2350000	—	135	—	—	170M5500	—	170M5650	
3	315	9500	58000	77500	85	170M6338*	170M6538*	—	170M6588*	—
	350	13500	81500	110000	90	170M6339*	170M6539*	—	170M6589*	—
	400	19500	120000	160000	95	170M6340*	170M6540*	—	170M6590*	—
	450	31000	185000	245000	100	170M6341*	170M6541*	—	170M6591*	—
	500	39000	235000	310000	105	170M6342*	170M6542*	—	170M6592*	—
	550	55000	325000	435000	110	170M6343*	170M6543*	—	170M6593*	—
	630	83500	495000	665000	115	170M6344*	170M6544*	170M6494*	170M6594*	170M6644*
	700	115000	705000	940000	120	170M6345*	170M6545*	170M6495*	170M6595*	170M6645*
	800	205000	995000	1300000	125	†170M6346	170M6546*	170M6496*	†170M6596	170M6646*
	900	305000	1500000	1900000	130	‡170M6347	†170M6547	170M6497*	‡170M6597	170M6647*
1000	450000	2150000	2750000	135	‡170M6348	†170M6548	170M6498*	‡170M6598	170M6648*	
1100	575000	2800000	3600000	140	‡170M6349	‡170M6549	170M6499*	‡170M6599	170M6649*	
†1250	810000	3950000	—	145	—	—	170M6500	—	170M6650	
†1400	1250000	6000000	—	150	—	—	170M6501	—	170M6651	

*UL Recognized.

Individual Fuse Weight: Size 1* = 0.380 Kg
 Size 1 = 0.580 Kg
 Size 2 = 0.900 Kg
 Size 3 = 1.250 Kg

Rated voltage †1100 ‡1000V

1 kg = 2.2 lbs. 1 lb = 0.45 kg

BIF document: 720031



European Style Square Body

French Standard—40-1500 Amps.

Voltage Rating: 690V (IEC), 700V (UL)

Interrupting Rating: 300kA RMS Symmetrical (estimated)

Agency Approvals:

UL Recognized, Std. 248-13 **CE**

Watts loss provided at rated current.

Microswitch indicator ordered separately. See bottom of page 138.



Electrical Characteristics

Ordering Information

Size	Rated Current RMS-Amps	I ² t (A ² s)		Watts Loss	-E/ Type T Indicator for Micro	-EKN/ Type K Indicator for Micro	Carton Qty.	Carton Weight (Kg)
		Pre-arc	Clearing at 660V					
1*	40	40	270	9	170M3308*	170M3358*	1	0.300
	50	77	515	11	170M3309*	170M3359*	1	0.300
	63	115	770	14	170M3310*	170M3360*	1	0.300
	80	185	1250	18	170M3311*	170M3361*	1	0.300
	100	360	2450	21	170M3312*	170M3362*	1	0.300
	125	550	3700	26	170M3313*	170M3363*	1	0.300
	160	1100	7500	30	170M3314*	170M3364*	1	0.300
	200	2200	15000	35	170M3315*	170M3365*	1	0.300
	250	4200	28500	40	170M3316*	170M3366*	1	0.300
	315	7000	46500	50	170M3317*	170M3367*	1	0.300
	350	10000	68500	55	170M3318*	170M3368*	1	0.300
	400	15000	105000	60	170M3319*	170M3369*	1	0.300
	450	21000	140000	65	170M3320*	170M3370*	1	0.300
	500	27000	180000	70	170M3321*	170M3371*	1	0.300
	1	200	1650	11500	45	170M4308*	170M4358*	1
250		3100	21000	55	170M4309*	170M4359*	1	0.470
315		6200	42000	58	170M4310*	170M4360*	1	0.470
350		8500	59000	60	170M4311*	170M4361*	1	0.470
400		13500	91500	65	170M4312*	170M4362*	1	0.470
450		17000	120000	70	170M4313*	170M4363*	1	0.470
500		25000	170000	72	170M4314*	170M4364*	1	0.470
550		34000	230000	75	170M4315*	170M4365*	1	0.470
630		52000	350000	80	170M4316*	170M4366*	1	0.470
700		69500	465000	85	170M4317*	170M4367*	1	0.470
800	105000	725000	95	170M4318*	170M4368*	1	0.470	
2	400	11000	74000	65	170M5308*	170M5358*	1	0.620
	450	15500	105000	70	170M5309*	170M5359*	1	0.620
	500	21500	145000	75	170M5310*	170M5360*	1	0.620
	550	28000	190000	80	170M5311*	170M5361*	1	0.620
	630	41000	275000	90	170M5312*	170M5362*	1	0.620
	700	60500	405000	95	170M5313*	170M5363*	1	0.620
	800	86000	575000	105	170M5314*	170M5364*	1	0.620
	900	125000	840000	110	170M5315*	170M5365*	1	0.620
	1000	180000	1250000	115	170M5316*	170M5366*	1	0.620
	3	500	14000	95000	95	170M6308*	170M6358*	1
550		19500	135000	100	170M6309*	170M6359*	1	0.930
630		31000	210000	105	170M6310*	170M6360*	1	0.930
700		44500	300000	110	170M6311*	170M6361*	1	0.930
800		69500	465000	115	170M6312*	170M6362*	1	0.930
900		100000	670000	120	170M6313*	170M6363*	1	0.930
1000		140000	945000	125	170M6314*	170M6364*	1	0.930
1100		190000	1300000	130	170M6315*	170M6365*	1	0.930
1250		290000	1950000	140	170M6316*	170M6366*	1	0.930
1400		370000	2450000	155	170M6317*	170M6367*	1	0.930
1500	460000	3100000	160	170M6318*	170M6368*	1	0.930	

*UL Recognized.



European Style Square Body

US Standard — 40-2000 Amps.

Voltage Rating: 690V (IEC), 700V (UL)

Interrupting Rating: 300kA RMS Symmetrical (estimated)

Agency Approvals:

UL Recognized, Std. 248-13 **CE**

Watts loss provided at rated current.

Microswitch indicator ordered separately. See bottom of page 138.



Electrical Characteristics

Ordering Information

Size	Rated Current RMS-Amps	I _t (A·s)		Watts Loss	-FU/- Without Indicator		-FKE/- Type K Indicator for Micro		-FU/115 Without Indicator		-FKE/115 Type K Indicator for Micro		Carton Qty.	Carton Weight (Kg)
		Pre-arc	Clearing at 660V											
1*	40	40	270	9	170M3608*	170M3658*	170M3708*	170M3758*	1	0.340				
	50	77	515	11	170M3609*	170M3659*	170M3709*	170M3759*	1	0.340				
	63	115	770	14	170M3610*	170M3660*	170M3710*	170M3760*	1	0.340				
	80	185	1250	18	170M3611*	170M3661*	170M3711*	170M3761*	1	0.340				
	100	360	2450	21	170M3612*	170M3662*	170M3712*	170M3762*	1	0.340				
	125	550	3700	26	170M3613*	170M3663*	170M3713*	170M3763*	1	0.340				
	160	1100	7500	30	170M3614*	170M3664*	170M3714*	170M3764*	1	0.340				
	200	2200	15000	35	170M3615*	170M3665*	170M3715*	170M3765*	1	0.340				
	250	4200	28500	40	170M3616*	170M3666*	170M3716*	170M3766*	1	0.340				
	315	7000	46500	50	170M3617*	170M3667*	170M3717*	170M3767*	1	0.340				
	350	10000	68500	55	170M3618*	170M3668*	170M3718*	170M3768*	1	0.340				
	400	15000	105000	60	170M3619*	170M3669*	170M3719*	170M3769*	1	0.340				
	450	21000	140000	65	170M3620*	170M3670*	170M3720*	170M3770*	1	0.340				
	500	27000	180000	70	170M3621*	170M3671*	170M3721*	170M3771*	1	0.340				
	550	34000	230000	75	170M3622*	170M3672*	170M3722*	170M3772*	1	0.340				
630	48500	325000	80	170M3623*	170M3673*	170M3723*	170M3773*	1	0.340					
1	200	1650	11500	45	170M4608*	170M4658*	170M4708*	170M4758*	1	0.500				
	250	3100	21000	55	170M4609*	170M4659*	170M4709*	170M4759*	1	0.500				
	315	6200	42000	58	170M4610*	170M4660*	170M4710*	170M4760*	1	0.500				
	350	8500	59000	60	170M4611*	170M4661*	170M4711*	170M4761*	1	0.500				
	400	13500	91500	65	170M4612*	170M4662*	170M4712*	170M4762*	1	0.500				
	450	17000	120000	70	170M4613*	170M4663*	170M4713*	170M4763*	1	0.500				
	500	25000	170000	72	170M4614*	170M4664*	170M4714*	170M4764*	1	0.500				
	550	34000	230000	75	170M4615*	170M4665*	170M4715*	170M4765*	1	0.500				
	630	52000	350000	80	170M4616*	170M4666*	170M4716*	170M4766*	1	0.500				
	700	69500	465000	85	170M4617*	170M4667*	170M4717*	170M4767*	1	0.500				
	800	105000	725000	95	170M4618*	170M4668*	170M4718*	170M4768*	1	0.500				
	†900	155000	†850000	100	170M4619	170M4669	170M4719	170M4769	1	0.500				
	2	400	11000	74000	65	170M5608*	170M5658*	170M5708*	170M5758*	1	0.630			
		450	15500	105000	70	170M5609*	170M5659*	170M5709*	170M5759*	1	0.630			
		500	21500	145000	75	170M5610*	170M5660*	170M5710*	170M5760*	1	0.630			
550		28000	190000	80	170M5611*	170M5661*	170M5711*	170M5761*	1	0.630				
630		41000	275000	90	170M5612*	170M5662*	170M5712*	170M5762*	1	0.630				
700		60500	405000	95	170M5613*	170M5663*	170M5713*	170M5763*	1	0.630				
800		86000	575000	105	170M5614*	170M5664*	170M5714*	170M5764*	1	0.630				
900		125000	840000	110	170M5615*	170M5665*	170M5715*	170M5765*	1	0.630				
1000		180000	1250000	115	170M5616*	170M5666*	170M5716*	170M5766*	1	0.630				
1100		245000	1600000	120	170M5617*	170M5667*	170M5717*	170M5767*	1	0.630				
1250		365000	2400000	130	170M5618*	170M5668*	170M5718*	170M5768*	1	0.630				
3		500	14000	95000	95	170M6608*	170M6658*	170M6708*	170M6758*	1	0.950			
		550	19500	135000	100	170M6609*	170M6659*	170M6709*	170M6759*	1	0.950			
		630	31000	210000	105	170M6610*	170M6660*	170M6710*	170M6760*	1	0.950			
		700	44500	300000	110	170M6611*	170M6661*	170M6711*	170M6761*	1	0.950			
	800	69500	465000	115	170M6612*	170M6662*	170M6712*	170M6762*	1	0.950				
	900	100000	670000	120	170M6613*	170M6663*	170M6713*	170M6763*	1	0.950				
	1000	140000	945000	125	170M6614*	170M6664*	170M6714*	170M6764*	1	0.950				
	1100	190000	1300000	130	170M6615*	170M6665*	170M6715*	170M6765*	1	0.950				
	1250	290000	1950000	140	170M6616*	170M6666*	170M6716*	170M6766*	1	0.950				
	1400	370000	2450000	155	170M6617*	170M6667*	170M6717*	170M6767*	1	0.950				
	1500	460000	3100000	160	170M6618*	170M6668*	170M6718*	170M6768*	1	0.950				
	1600	580000	3900000	160	170M6619*	170M6669*	170M6719*	170M6769*	1	0.950				
	†1800	880000	†5250000	165	170M6620	170M6670	170M6720	170M6770	1	0.950				
	†2000	1150000	†6350000	175	170M6621	170M6671	170M6721	170M6771	1	0.950				

*UL Recognized. Rated voltage †600V ‡550V



European Style Square Body

US Standard — 50-1400 Amps.

Voltage Rating: 1250V (IEC), 1300V (UL)

Interrupting Rating: 300kA RMS Symmetrical (estimated)

Agency Approvals:

UL Recognized, Std. 248-13 **CE**

Watts loss provided at rated current.

Microswitch indicator ordered separately. See bottom of page 138.



Electrical Characteristics

Ordering Information

Size	Rated Current RMS-Amps	I _t (A·s)			Watts Loss	-FU/115 Without Indicator	-FKE/115 Type K Indicator for Micro	Carton Qty.	Carton Weight (Kg)	
		Pre-arc	Clearing at 1000V	Clearing at 1250V						
1*	50	135	815	1100	15	170M3688*	170M3738*	1	0.425	
	63	215	1300	1750	20	170M3689*	170M3739*	1	0.425	
	80	420	2500	3350	25	170M3690*	170M3740*	1	0.425	
	100	750	4450	5950	30	170M3691*	170M3741*	1	0.425	
	125	1450	9000	11500	35	170M3692*	170M3742*	1	0.425	
	160	2600	16000	21000	40	170M3693*	170M3743*	1	0.425	
	200	5150	31000	41000	45	170M3694*	170M3744*	1	0.425	
	250	9200	54500	73000	55	170M3695*	170M3745*	1	0.425	
	315	18500	115000	150000	60	170M3696*	170M3746*	1	0.425	
	350	27000	165000	220000	65	170M3697*	170M3747*	1	0.425	
	400	53000	265000	335000	70			1	0.425	
	1	160	1900	11500	15500	45	170M4688*	170M4738*	1	0.675
200		3800	22500	30000	50	170M4689*	170M4739*	1	0.675	
250		7750	46000	61500	60	170M4690*	170M4740*	1	0.675	
315		15000	90000	120000	65	170M4691*	170M4741*	1	0.675	
350		20000	125000	165000	70	170M4692*	170M4742*	1	0.675	
400		29500	175000	235000	75	170M4693*	170M4743*	1	0.675	
450		42000	250000	335000	80	170M4694*	170M4744*	1	0.675	
†500		69500	340000	435000	85	170M4695	170M4745	1	0.675	
†550		95000	465000	590000	95	170M4696	170M4746	1	0.675	
‡630		130000	660000	—	100	170M4697	170M4747	1	0.675	
2		250	6500	38500	51500	65	170M5688*	170M5738*	1	0.740
		280	9350	55500	74500	70	170M5689*	170M5739*	1	0.740
	315	13000	77500	105000	75	170M5690*	170M5740*	1	0.740	
	350	16500	97500	135000	80	170M5691*	170M5741*	1	0.740	
	400	23000	140000	180000	85	170M5692*	170M5742*	1	0.740	
	450	34000	205000	270000	90	170M5693*	170M5743*	1	0.740	
	500	48000	285000	380000	95	170M5694*	170M5744*	1	0.740	
	550	62000	370000	495000	100	170M5695*	170M5745*	1	0.740	
	630	115000	575000	730000	110	170M5696*	170M5746*	1	0.740	
	†700	160000	795000	1050000	115	170M5697	170M5747	1	0.740	
	†800	245000	1200000	1550000	120	170M5698	170M5748	1	0.740	
	†900	360000	1750000	—	125	170M5699	170M5749	1	0.740	
‡1000	480000	2350000	—	135	170M5700	170M5750	1	0.740		
3	315	9500	58000	77500	185	170M6688*	170M6738*	1	1.250	
	350	13500	81500	110000	90	170M6689*	170M6739*	1	1.250	
	400	19500	120000	160000	95	170M6690*	170M6740*	1	1.250	
	450	31000	185000	245000	100	170M6691*	170M6741*	1	1.250	
	500	39000	235000	310000	105	170M6692*	170M6742*	1	1.250	
	550	55000	325000	435000	110	170M6693*	170M6743*	1	1.250	
	630	83500	495000	665000	115	170M6694*	170M6744*	1	1.250	
	700	115000	705000	940000	120	170M6695*	170M6745*	1	1.250	
	800	205000	995000	1300000	125	170M6696*	170M6746*	1	1.250	
	900	305000	1500000	1900000	130	170M6697*	170M6747*	1	1.250	
	¥1000	450000	2150000	2750000	135	†170M6698*	†170M6748*	1	1.250	
	¥1100	575000	2800000	3600000	140	†170M6699*	†170M6749*	1	1.250	
¥1250	810000	3950000	—	145	‡170M6700*	‡170M6750*	1	1.250		
¥1400	1250000	6000000	—	150	‡170M6701*	‡170M6751*	1	1.250		

*UL Recognized. Rated voltage †1100V ‡1000V ¥ UL Recognized at 1000V



Indicator System

Indicators

Typower ZILOX fuses are available with three different indicator systems.

Visual Indicator

The indicator situated in one cover plate is clearly visible as soon as the fuse has operated. The minimum voltage for operating the indicator is 20V.

Type T Indicator

The indicator is situated on one cover plate with a cover plate tag to accommodate an auxiliary switch. The minimum voltage for operating the indicator is 20V. A special low voltage indicator (1.5V) is available on request.

Type K Indicator

This indicator is situated on the fuse body. It is covered by an adaptor for snap-on mounting of an auxiliary switch. The operating voltage of the indicator is 1.5V. As a matter of safety, the factory mounted adaptor must not be removed from the fuse.

Microswitch

The Typower ZILOX fuses with either type T indicator or type K indicator can be equipped with a microswitch for remote electrical indication of fuse operations. All microswitches have one normally open and one normally closed contact. Ratings are 2A, 250 Vac.



Microswitch	6.3 x 0.8 mm Lugs	2.8 x 0.5 mm Lugs	Indicator Type
170H0235	x		T
170H0236	x		T
170H0237		x	T
170H0238		x	T
170H0069	x		K

Size	DIN 43 653		DIN 43 620		French Style		Flush End		US Style
	Type T	Type K	Type T	Type K	Type T	Type K	Type T	Type K	Type K
000	170H0236 170H0238		170H0236 170H0238						
00	170H0235 170H0237						170H0235 170H0237		
1*	170H0235 170H0237	170H0069	170H0235 170H0237		170H0236 170H0238	170H0069		170H0069	170H0069
1	170H0235 170H0237	170H0069			170H0236 170H0238	170H0069		170H0069	170H0069
2	170H0235 170H0237	170H0069	170H0235 170H0237		170H0236 170H0238	170H0069		170H0069	170H0069
3	170H0235 170H0237	170H0069	170H0236 170H0238		170H0236 170H0238	170H0069		170H0069	170H0069
4								170H0069	
23								170H0069	
24								170H0069	



Fuse Bases (Blocks)

DIN 43 653 Fuse Bases

For the Typower ZILOX fuses according to DIN 43 653, the following fuse bases are available:

Part Number	Max. Voltage	Rated Current	Center Distance
170H3003	1000V	630A	80mm
170H3004	1000V	1250A	80mm
170H3005	1400V	630A	110mm
170H3006	1400V	1250A	110mm

The fuse bases rated 1250A can also be used for the fuses with higher rated current if the maximum load current is derated according to the table below:

Fuse Rating	Max. Load Current In Fuse Base
1400A	1325A
1500A	1400A
1600A	1500A
1800A	1650A
2000A	1800A

Fixed Center Base Style	Max. Voltage	Max. Fuse Current Rating	Fuse Size
170H1007	1000V	400A	00, 000
170H1013	660V	200A	0000,000

U.L. Recognized to U.L. 512.

Universal Fuse Bases

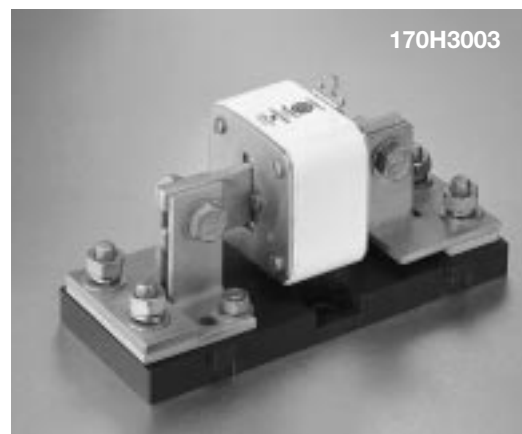
For the Typower ZILOX fuses according to DIN 43 653, French style and North American style, the following fuse bases are available:

Modular Base Style	Max. Voltage	Max. Fuse Current Rating	BIF Document
1BS101	600V	100A	1206
1BS102	600V	400A	1207
1BS103	600V	400A	1208
1BS104	600V	600A	1209
BH-0	700V	100A	1200
BH-1	2500V	400A	1201
BH-2	5000V	400A	1202
BH-3	1250V	700A	1203

Modular fuse bases are U.L. Recognized to U.L. 512 and meet the spacing requirements of U.L. 347. Contact Bussmann sales representative for more complete ordering information.

DIN 43 620 Fuse Bases

For fuse bases used with Typower ZILOX fuses according to DIN 43 620, please contact your local Bussmann sales representative.



British Standard BS88: Part 4

Voltage Rating

240 Volt AC/150 Volt DC	6 to 900 Amperes
690 Volt AC/450 Volt DC	6 to 700 Amperes

All Bussmann British Style fuses are tested to IEC 269: Part 4. This standard requires a test voltage which is 10% higher than the rated voltage. In North America, fuses are required to clear only their rated voltage.

Designed and tested to:

- BS 88: Part 4
- IEC 269: Part 4
- UL Recognized, Std. 248-13

Bussmann British Style products use innovative arc quenching techniques and high grade materials to provide:

- Minimal energy let-thru (I²t)
- Excellent DC performance
- Good surge withstand profile



Accessories

Trip-indicator fuses are available for use in parallel with the main fuse. Indicator fuses can be attached to the associated fuselink, or mounted separately in panel-mounted fuseclips. In addition, a push-on adaptor and microswitch attachment are available, to provide remote indication. Fuseblocks are also available for most applications.

240V AC/150V DC - 6 to 900 Amps.

Interrupting Rating: 200kA RMS Symmetrical.

Agency Approvals: UL Recognized, Std. 248-13

Watts loss provided at rated current.

CE CE logo denotes compliance with European Union Low Voltage Directive (50-1000V AC, 75-1500V DC). Refer to BIF document #8002 or contact Bussmann Application Engineering at 636-527-1270 for more information.

Electrical Characteristics

Ordering Information

Size	Rated Current RMS-Amps	I ² t (A ² SEC)			Watts Loss	Part Number	Carton Qty.	Carton Weight (Kg)
		Pre-arc	Clearing at 120V	Clearing at 240V				
LCT	6	2	6	9	1.0	6LCT	20	0.110
	10	3.8	12	22	2.5	10LCT	20	0.110
	12	7	22	32	2.5	12LCT	20	0.110
	16	20	50	100	2.5	16LCT	20	0.110
	20	25	80	160	4.0	20LCT	20	0.110
LET	25	18	120	250	4.0	25LET	10	0.310
	32	32	200	450	5.0	32LET	10	0.310
	35	50	320	600	5.0	35LET	10	0.310
	50	100	500	1400	7.0	50LET	10	0.310
	63	180	1100	2200	9.0	63LET	10	0.310
	80	300	1900	3800	10.0	80LET	10	0.310
	100	600	3800	7500	10.0	100LET	10	0.310
	125	600	3800	7500	16.0	125LET	10	0.310
	160	1100	7000	16000	20.0	160LET	10	0.310
	180	1600	12000	29000	21.0	180LET	10	0.310
LMT	160	1100	7000	16000	17.0	160LMT	1	0.180
	200	1500	10000	20000	28.0	200LMT	1	0.180
	250	3200	20000	40000	28.0	250LMT	1	0.180
	315	6000	35000	75000	35.0	315LMT	1	0.180
	355	8000	50000	100000	35.0	355LMT	1	0.180
	400	14000	70000	160000	40.0	400LMT	1	0.180
	450	18000	100000	220000	42.0	450LMT	1	0.180
LMMT	400	6000	35000	80000	60.0	400LMMT	1	0.370
	500	14000	80000	170000	64.0	500LMMT	1	0.370
	630	24000	150000	300000	75.0	630LMMT	1	0.370
	710	32000	200000	460000	77.0	710LMMT	1	0.370
	800	52000	300000	600000	82.0	800LMMT	1	0.370
	900	75000	400000	800000	97.0	900LMMT	1	0.370

Note: 7LET, 10LET, 12LET and 16LET are available for replacement purposes on existing equipment (not UL recognized).



British Standard BS88: Part 4

660V AC/450V DC 6-700 Amps.

Interrupting Rating: 200kA RMS Symmetrical.

UL Recognized, Std. 248-13, Watts loss provided at rated current.

MT, MMT and additional ratings of ET and EET are available for replacement purposes on existing equipment and are BS 88: Part 4 approved. **CE**



Electrical Characteristics

Ordering Information

Size	Rated Current RMS-Amps	I ² t (A ² SEC)			Watts Loss	Part Number	Carton Qty.	Carton Weight (Kg)
		Pre-arc	Clearing at 415V	Clearing at 660V				
CT	6	1.8	8.5	12	2	6CT	20	0.160
	10	7	30	48	3	10CT	20	0.160
	12	10	40	65	3	12CT	20	0.160
	16	16	66	110	7	16CT	20	0.160
	20	32	150	220	7	20CT	20	0.160
ET	25	25	150	250	7	25ET	10	0.420
	32	32	190	350	11	32ET	10	0.420
	35	52	310	500	11	35ET	10	0.420
	40	103	600	900	9	40ET	10	0.420
	45	103	680	1100	11	45ET	10	0.420
	56	135	950	1500	14	56ET	10	0.420
	63	171	1200	2000	16	63ET	10	0.420
	80	360	2500	4000	18	80ET	10	0.420
	35	33	130	200	9	35FE	10	0.420
	40	52	180	300	9	40FE	10	0.420
45	76	270	450	11	45FE	10	0.420	
50	103	380	600	11	50FE	10	0.420	
63	135	480	750	12	63FE	10	0.420	
71	210	600	950	17	71FE	10	0.420	
80	250	900	1500	20	80FE	10	0.420	
90	360	1300	2100	20	90FE	10	0.420	
100	470	1800	2800	23	100FE	10	0.420	
90	490	3000	4500	19	90EET	5	0.450	
110	600	4000	6500	27	110EET	5	0.450	
140	1050	7000	12000	35	140EET	5	0.450	
160	1500	10000	17000	39	160EET	5	0.450	
100	400	1600	2400	24	100FEE	5	0.450	
120	540	1900	3100	32	120FEE	5	0.450	
140	850	2500	3800	36	140FEE	5	0.450	
160	1000	3700	5700	46	160FEE	5	0.450	
180	1400	5300	8400	46	180FEE	5	0.450	
200	1900	7100	11400	52	200FEE	5	0.450	
180	1400	7500	13500	40	180FM	1	0.240	
200	2600	10500	18500	40	200FM	1	0.240	
225	3700	14500	26500	44	225FM	1	0.240	
250	5200	20500	37500	48	250FM	1	0.240	
280	7000	30500	55000	48	280FM	1	0.240	
315	10000	40000	77000	55	315FM	1	0.240	
350	15000	60000	105000	55	350FM	1	0.240	
400	10000	40000	72500	85	400FMM	1	0.450	
450	15000	60000	105000	90	450FMM	1	0.450	
500	20000	82000	150000	100	500FMM	1	0.450	
550	30000	120000	215000	100	550FMM	1	0.450	
630	45000	180000	310000	100	630FMM	1	0.450	
700	60000	245000	420000	120	700FMM	1	0.450	
160	2400	15000	25000	26	160MT	1	0.260	
180	3800	25000	38000	26	180MT	1	0.260	
200	6000	40000	58000	27	200MT	1	0.260	
250	11500	80000	110000	32	250MT	1	0.260	
280	16500	100000	150000	35	280MT	1	0.260	
315	19000	125000	180000	42	315MT	1	0.260	
355	22000	160000	200000	51	355MT	1	0.260	
180	1650	12000	18000	42	180MMT	1	.0470	
200	2200	16000	23000	42	200MMT	1	.0470	
225	3700	26000	40000	42	225MMT	1	.0470	
280	6600	47000	70000	47	280MMT	1	.0470	
315	8600	62000	91000	51	315MMT	1	.0470	
355	13500	97000	140000	54	355MMT	1	.0470	
400	21000	150000	220000	60	400MMT	1	.0470	
450	30000	220000	320000	57	450MMT	1	.0470	
500	42000	300000	450000	64	500MMT	1	.0470	
560	60000	430000	640000	64	560MMT	1	.0470	
630	68500	500000	720000	86	630MMT	1	.0470	
710	78000	600000	850000	105	710MMT	1	.0470	

Note: 8ET, 12ET, 15ET, 20ET, 65EET and 75EET are available for replacement purposes on existing equipment (not UL recognized).

† 500V DC (IEC) rating.



Indicator System and Fuse Bases (Blocks)



Trip Indicator

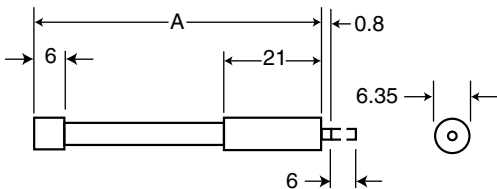
Trip-indicator fuselinks are available for use in parallel with the main fuselinks. They can either be attached to the associated fuselink or mounted separately in panel mounted fuse clips, Part No. CL1. A push-on adaptor and microswitch attachment is available for use with the trip indicator to give the facility of remote indication, reference MAI or MBI.

Fuse ratings of 20A and below cannot usually accommodate a trip fuselink in parallel.

Where trip indicator fuselinks are to be attached to the main fuselink, an accessory pack comprising a pair of mounting clips and an appropriate trip indicator fuselink will be required.

The ordering code references for these packs are listed below:

Fuse Type	Order Ref.	Fuse Type	Order Ref.
ET	EC-600	FM	MC-600
EET	EC-600	FMM	MC-600
FE	EC-600	LMT	MC-250
FEE	EC-600	LMMT	MC-250
LET	EC-250		



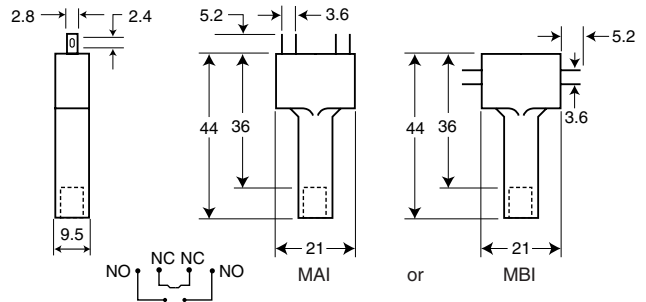
Dimensions in mm.
1mm = 0.0394" 1" = 25.4mm

Trip-indicator Fuselink Data

Type	Dim. 'A' Max.	Voltage Rating	Type	Dim. 'A' Max.	Voltage Rating
TI250	37.6	250	TI1100	98.4	1100
TI500	47.5	500	TI1500	120.8	1500
TI600	55.7	600	TI2000	147.5	2000
TI700	61.8	700	TI2500	198.3	2500

Microswitch and Adaptor Type MAI

Current Rating:	
AC 50/60Hz resistive load @ 250 VRMS	4A
AC 50/60Hz resistive load @ 127 VRMS	6A
DC, resistive load @ 110 Vdc	0.7
DC, resistive load @ 30 Vdc	2
Maximum Working Voltage:	
Contact-to-contact (RMS)	1000V
Contact-to-contact (RMS)	1500V



Universal and Stud Fuseblocks

Stud Fuseblocks

Part No.	Stud Height	Stud Dia. & Threads
C5268-1	1.00"	5/16"-18
C5268-2	1.75"	5/16"-18
C5268-3	0.75"	5/16"-18
C5268-4	1.00"	1/4"-20
C5268-5	1.75"	1/4"-20

Universal Fuseblocks

Modular Base	Max. Voltage	Max. Fuse Current Rating	BIF Document
1BS101	600V	100A	1206
1BS102	600V	400A	1207
1BS103	600V	400A	1208
1BS104	600V	600A	1209



Ferrule Style



Voltage Rating

150 Volt AC/DC	5 to 60 Amperes
250 Volt AC/DC	1 to 30 Amperes
500 Volt AC/DC	0.25 to 30 Amperes
600/400 Volt AC/DC	6 to 32 Amperes
700 Volt AC/DC	1 to 100 Amperes
750 Volt AC/DC	5 to 60 Amperes
1000/800 Volt AC/DC	20 to 30 Amperes
1250/1000 Volt AC/DC	20 to 30 Amperes
1500/1000 Volt AC/DC	2 to 15 Amperes

All Bussmann Ferrule fuses—except 660 Volt—have been tested at their rated voltage. The 660 Volt Ferrule fuse has been tested to the IEC 269 standard, which requires clearing at the rated voltage +10%.

Select Fuses designed and tested to:

- IEC 269: Part 4
- UL Recognized, Std. 248-13

Bussmann offers a full line of Ferrule Style (cylindrical and clip-mounted) fuses, designed and tested to meet standards and requirements in various locations around the world. Their unique design and construction provide:

- Superior cycling capability
- Low energy let-thru (I²t)

Ferrule fuses provide an excellent solution for small UPS, small AC drives and other low power applications where space is at a premium.

Accessories

Ferrule fuses may be mounted in fuse clips, fuseholders, fuseblocks or fused switches. A variety of products are available to suit most end-use requirements.

FWA 150V AC

Interrupting Rating: 100kA RMS Symmetrical.

Agency Approvals: UL Recognized, 150V, Std. 248-13
Watts loss provided at rated current.



CE

Electrical Characteristics

Size	Rated Current RMS-Amps	I ² t (A ² SEC)		Watts Loss	Part Number	Carton Qty.	Carton Weight (Kg)
		Pre-arc	Clearing at 150V				
10 x 38 mm (1 ¹ / ₃₂ "	5	1.6	8	1	FWA-5A10F	10	0.100
	10	3.6	16	2.7	FWA-10A10F	10	0.100
	15	14	55	3.3	FWA-15A10F	10	0.100
	20	33	130	3.8	FWA-20A10F	10	0.100
	25	58	220	4.9	FWA-25A10F	10	0.100
	30	100	400	4.9	FWA-30A10F	10	0.100
21 x 51 mm (1 ¹ / ₁₆ "	35	75	800	4.5	FWA-35A21F	10	0.600
	40	100	1000	5.1	FWA-40A21F	10	0.600
	45	130	1300	6	FWA-45A21F	10	0.600
	50	170	1600	7.3	FWA-50A21F	10	0.600
	60	250	2400	8.0	FWA-60A21F	10	0.600

Ordering Information



Ferrule Style

FWX 250V AC/250V DC (250V DC on 5 through 30)

Interrupting Rating: 200kA RMS Symmetrical.

Agency Approvals: UL Recognized, 250V, Std. 248-13

Watts loss provided at rated current. 



Electrical Characteristics

Ordering Information

Size	Rated Current RMS-Amps	I ² t (A ² SEC)		Watts Loss	Part Number	Carton Qty.	Carton Weight (Kg)
		Pre-arc	Clearing at 250V				
14 x 51mm	1	—	—	—	FWX-1A14F	10	0.225
	2	—	—	—	FWX-2A14F	10	0.225
	3	—	—	—	FWX-3A14F	10	0.225
	4	—	—	—	FWX-4A14F	10	0.225
	5	1.6	13	1.3	FWX-5A14F	10	0.225
	10	3.6	24	3.4	FWX-10A14F	10	0.225
	15	14	83	3.8	FWX-15A14F	10	0.225
	20	33	200	4.6	FWX-20A14F	10	0.225
	25	58	300	5.3	FWX-25A14F	10	0.225
	30	100	500	5.9	FWX-30A14F	10	0.225

Fuse Block: 1976 - (pole) BIF #1210

BIF document: 720006

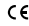
FWH 500V AC/500V DC

Interrupting Rating: 6 mm x 32 mm (Interrupting rating varies—See BIF document for details)

14 mm x 51 mm (200kA RMS Symmetrical).

Agency Approvals: UL Recognized, 500V, Std. 248-13

Watts loss provided at rated current.

 CE logo denotes compliance with European Union Low Voltage Directive (50-1000V AC, 75-1500V DC). Refer to BIF document #8002 or contact Bussmann Application Engineering at 636-527-1270 for more information.

Electrical Characteristics

Ordering Information

Size	Rated Current RMS-Amps	I ² t (A ² SEC)		Watts Loss	Part Number	Carton Qty.	Carton Weight (Kg)	
		Pre-arc	Clearing at 500V					
6 x 32 mm (¼" x 1¼")	0.25	0.01	0.05	2.7	FWH-.250A6F	10	0.03	
	0.5	0.05	0.25	1.2	FWH-.500A6F	10	0.03	
	1	0.4	2	1.7	FWH-001A6F	10	0.03	
	2	1.3	3.5	3.2	FWH-002A6F	10	0.03	
	3.15	3.1	7.7	2.9	FWH-3.15A6F	10	0.03	
	5	15	40	2.1	FWH-005A6F	10	0.03	
	6.3	36	90	2.3	FWH-6.30A6F	10	0.03	
	7	50	125	2.5	FWH-007A6F	10	0.03	
	10	—	—	—	FWH-010A6F	10	0.03	
	12.5	20	—	3.53	FWH-12.5A6F	10	0.03	
	15	44	146	3.08	FWH-015A6F	10	0.03	
	16	48	177	4.48	FWH-016A6F	10	0.03	
	20	75	259	4.26	FWH-020A6F	10	0.03	
	25	—	—	—	FWH-025A6F	10	0.03	
	30	—	—	—	FWH-030A6F	10	0.03	
	14 x 51mm (9/16")	1	—	—	—	FWH-1A14F	—	—
		2	—	—	—	FWH-2A14F	—	—
3		—	—	2.3	FWH-3A14F	—	—	
4		—	—	—	FWH-4A14F	—	—	
5		1.6	6.4	1.5	FWH-5A14F*	10	0.250	
6		1.6	6.4	1.5	FWH-6A14F*	—	—	
10		3.6	13	4	FWH-10A14F*	10	0.250	
12		—	—	—	FWH-12A14F*	—	—	
15		10	40	5.5	FWH-15A14F*	10	0.250	
20		26	96	6	FWH-20A14F*	10	0.250	
25		49	191	7	FWH-25A14F*	10	0.250	
30		58	232	9	FWH-30A14F*	10	0.250	

BIF document: 14mm x 51mm, 720008 & 6mm x 32mm, 720038

*UL Recognized at 500V DC & CSA Component Acceptance at 500V AC/DC



Ferrule Style

FWC 600V AC

Interrupting Rating: 200kA RMS Symmetrical.

Agency Approvals: UL Recognized, 600V, Std. 248-13

Watts loss provided at rated current.



CE logo denotes compliance with European Union Low Voltage Directive (50-1000V AC, 75-1500V DC). Refer to BIF document #8002 or contact Bussmann Application Engineering at 636-527-1270 for more information.

Electrical Characteristics

Ordering Information

Size	Rated Current RMS-Amps	I ² t (A ² SEC)		Watts Loss	Part Number	Carton Qty.	Carton Weight (Kg)
		Pre-arc	Clearing at 600V				
10 x 38 mm (1 3/32")	6	4	30	1.5	FWC-6A10F	10	0.100
	8	6	50	2.0	FWC-8A10F	10	0.100
	10	9	70	2.5	FWC-10A10F	10	0.100
	12	15	120	3.0	FWC-12A10F	10	0.100
	16	25	150	3.5	FWC-16A10F	10	0.100
	20	34	260	4.8	FWC-20A10F	10	0.100
	25	60	390	6.0	FWC-25A10F	10	0.100
	32	95	600	7.5	FWC-32A10F	10	0.100

Fuse Block: BM Series BIF #1104

■ **400V DC U.L. Recognition**

BIF document: 720011

FWP 700V AC/700V DC; 660V (IEC)/700V (UL)

Interrupting Rating: 200kA RMS Symmetrical.

Agency Approvals: UL Recognized, 700V, Std. 248-13

(700V DC ratings for 5 through 30 amperes only). Consult Bussmann for other ratings.

Watts loss provided at rated current.



CE logo denotes compliance with European Union Low Voltage Directive (50-1000V AC, 75-1500V DC). Refer to BIF document #8002 or contact Bussmann Application Engineering at 636-527-1270 for more information.

Electrical Characteristics

Ordering Information

Size	Rated Current RMS-Amps	I ² t (A ² SEC)		Watts Loss	Part Number	Carton Qty.	Carton Weight (Kg)
		Pre-arc	Clearing at 660V				
14 x 51mm (9/16")	1	—	—	—	FWP-1A14F	10	0.225
	2	—	—	—	FWP-2A14F	10	0.225
	3	—	—	—	FWP-3A14F	10	0.225
	4	—	—	—	FWP-4A14F	10	0.225
	5	1.6	4	1.5	FWP-5A14F	10	0.225
	10	3.6	10	4	FWP-10A14F	10	0.225
	15	10	22	5.5	FWP-15A14F	10	0.225
	20	26	60	6	FWP-20A14F	10	0.225
	25	44	130	7	FWP-25A14F	10	0.225
	30	58	150	9	FWP-30A14F	10	0.225
	32	95	800	7.6	FWP-32A14F	10	0.225
	40	110	980	8	FWP-40A14F	10	0.225
	50	220	1800	9	FWP-50A14F	10	0.225

Fuse Block: 1976 - (pole) BIF #1210

□ **CSA Component Acceptance 5-30A at 700V AC/DC**

BIF document: 720025



Ferrule Style

FWP 700V AC

Interrupting Rating: 200kA RMS Symmetrical.

Agency Approvals: UL Recognized, 700V, Std. 248-13

Watts loss provided at rated current.



CE CE logo denotes compliance with European Union Low Voltage Directive (50-1000V AC, 75-1500V DC). Refer to BIF document #8002 or contact Bussmann Application Engineering at 636-527-1270 for more information.

Electrical Characteristics

Ordering Information

Size	Rated Current RMS-Amps	I ² t (A ² SEC)		Watts Loss	Part Number	Carton Qty.	Carton Weight (Kg)
		Pre-arc	Clearing at 660V				
22 x 58 mm (7/8")	20	34	370	4.6	FWP-20A22F	10	0.450
	25	60	560	5.6	FWP-25A22F	10	0.450
	32	95	850	7.0	FWP-32A22F	10	0.450
	40	185	1350	8.5	FWP-40A22F	10	0.450
	50	155	1120	9.5	FWP-50A22F	10	0.450
	63	310	2700	11	FWP-63A22F	10	0.450
	80	620	5100	13.5	FWP-80A22F	10	0.450
	100	1250	10000	16	FWP-100A22F	10	0.450

Fuse Block: J70100 - (pole) CR BIF #1211

■ 500V DC UL Recognition

BIF document: 720026

FWJ 1000V AC/800V DC

Interrupting Rating: 25kA RMS Symmetrical.

Agency Approvals: UL Recognized, 1000V AC/800V DC, Std. 248-13

Watts loss provided at rated current.



CE CE logo denotes compliance with European Union Low Voltage Directive (50-1000V AC, 75-1500V DC). Refer to BIF document #8002 or contact Bussmann Application Engineering at 636-527-1270 for more information.

Electrical Characteristics

Ordering Information

Size	Rated Current RMS-Amps	I ² t (A ² SEC)		Watts Loss	Part Number	Carton Qty.	Carton Weight (Kg)
		Pre-arc	Clearing at 1000V				
14 x 67 mm (9/16")	20	25	220	9	FWJ-20A14F	10	0.300
	25	33	350	11	FWJ-25A14F	10	0.300
	30	52	450	14	FWJ-30A14F	10	0.300

BIF document: 720028



Ferrule Style

FWK 750V 5-60A

Electrical Characteristics				Ordering Information				Dimensions
Size	Rated Current RMS-Amps	I ² t (A ² S)		Watts Loss	Part Number	Carton Qty.	Carton Weight (kg)	Figure Number
		Pre-arc	Clearing at 750 VDC					
20 × 127mm (13/16")	5	8.5	16	—	FWK-5A20F	10	0.95	Fig. 1
	8	50	100	—	FWK-8A20F			
	10	95	200	—	FWK-10A20F			
	15	100	240	—	FWK-15A20F			
	20	125	315	—	FWK-20A20F			
	25	400	1100	—	FWK-25A20F			
25 × 146mm (1")	30	800	2600	—	FWK-30A20F	10	1.65	Fig. 2
	35	1300	4300	—	FWK-35A25F			
	40	1600	5300	—	FWK-40A25F			
	50	3100	12000	—	FWK-50A25F			
	60	5900	24000	—	FWK-60A25F			

■ Interrupting rating 45kA RMS symmetrical.

1 kg = 2.2 lbs. 1 lb = 0.45 kg

■ 750 Vdc rating for 5 through 60 amperes (Time constant = 10-15 mS).

Dimensions

Fig. 1: 5-30 Amp Range

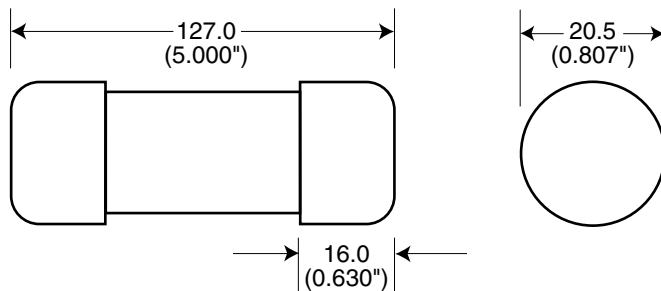
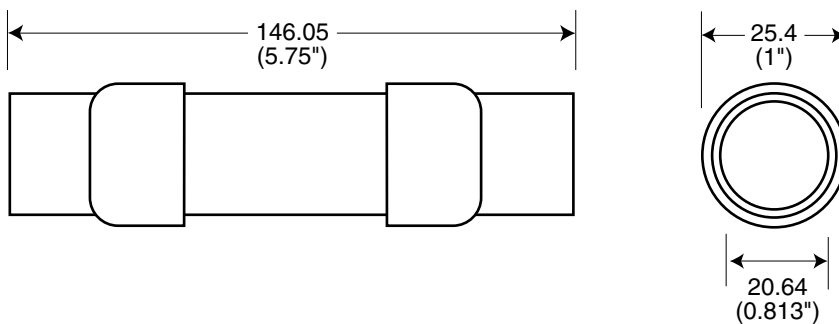


Fig. 2: 35-60 Amp Range



Dimension in mm.
1mm = 0.0394" 1" = 25.4mm



Ferrule Style

FWL/FWS 1250V/1500V 2-30A

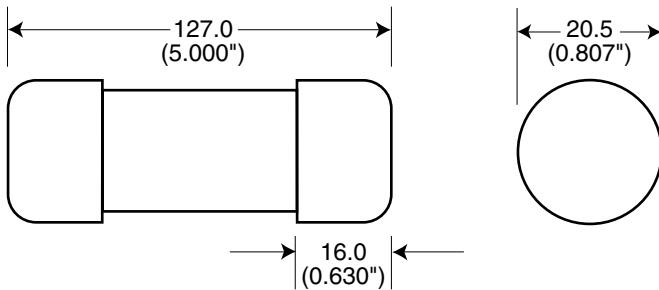
Electrical Characteristics				Ordering Information			Dimensions	
Size	Rated Current RMS-Amps	I²t (A²S)		Watts Loss	Part Number	Carton Qty.	Carton Weight (kg)	Figure Number
		Pre-arc	Clearing at 1000 VDC					
20 x 127mm ($\frac{9}{16}$ "	†2	0.8	2.4	4.4	FWS-2A20F	10	1.00	Fig. 1
	†6	27	81	6.7	FWS-6A20F			
	†10	170	400	3.0	FWS-10A20F			
	†15	300	700	5	FWS-15A20F			
	‡20	675	1550	5.9	FWL-20A20F			
	‡30	1850	4300	7.5	FWL-30A20F			

- Interrupting rating 45kA RMS Symmetrical.
- Rated voltage (IEC) †1500V ‡1250V
- 1000 Vdc rating.

1 kg = 2.2 lbs. 1 lb = 0.45 kg

Dimensions

Fig. 1: 2-30 Amp Range



Dimension in mm.
1mm = 0.0394" 1" = 25.4mm

